

What's New in Windows 11

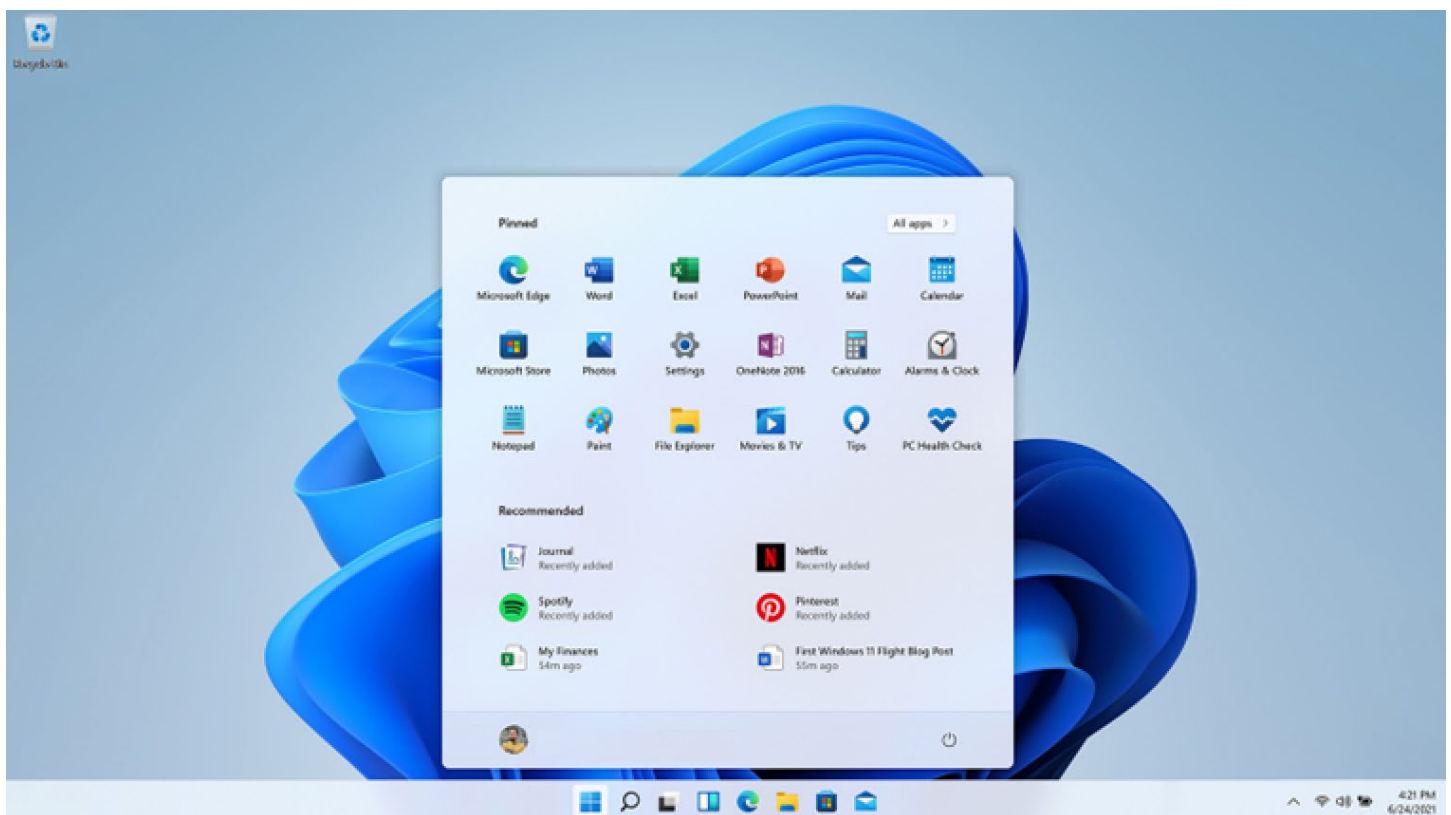
Windows 11, the latest operating system for PC desktop computers and laptops, now comes with all new devices given to the OISE community as part of Education Commons' Computer Renewal Program since the summer of 2023

Both in function and form, Windows 11 is still very similar to what you may already be using, Windows 10. While there are no radical changes, there are still some key differences to know – this short guide will tell you more.

Centered Start menu and icons in taskbar

The first thing you will notice to be different is the appearance of Windows 11. The familiar Start menu and icons in your task bar are still present and visible, but are now centered in the middle of the screen instead of the left side as you may be used to.

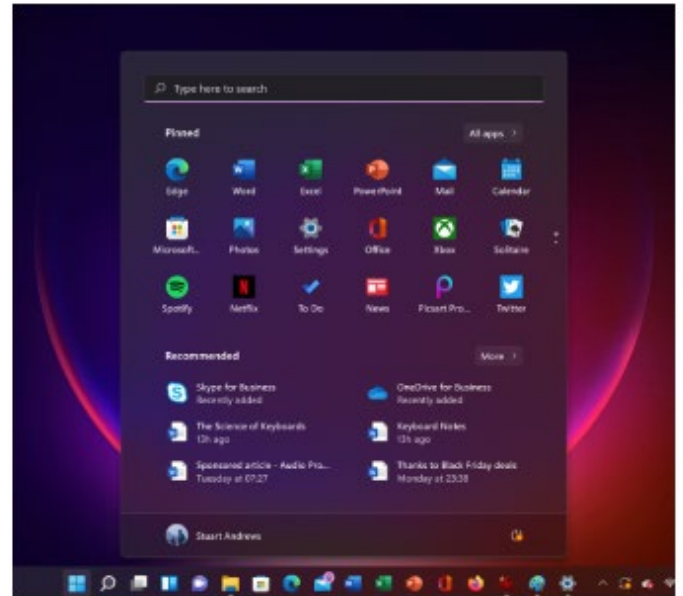
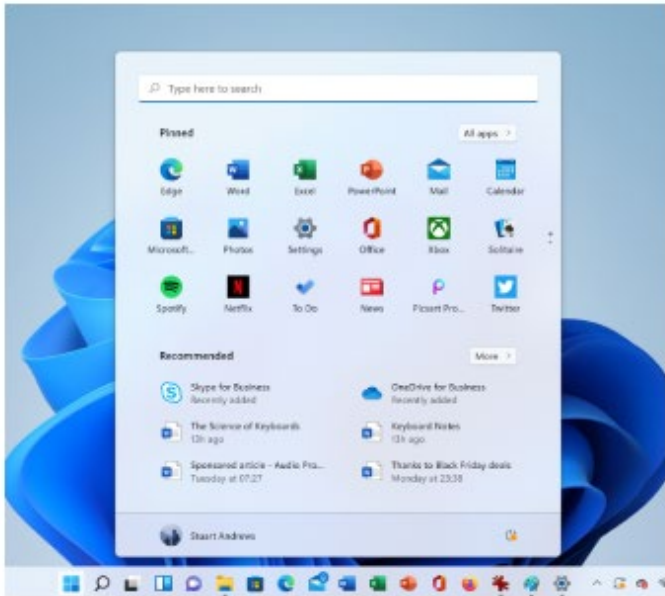
If you still prefer the layout in Windows 10, you have the option to align your Start menu and tool bar



Consistent and accessible display themes

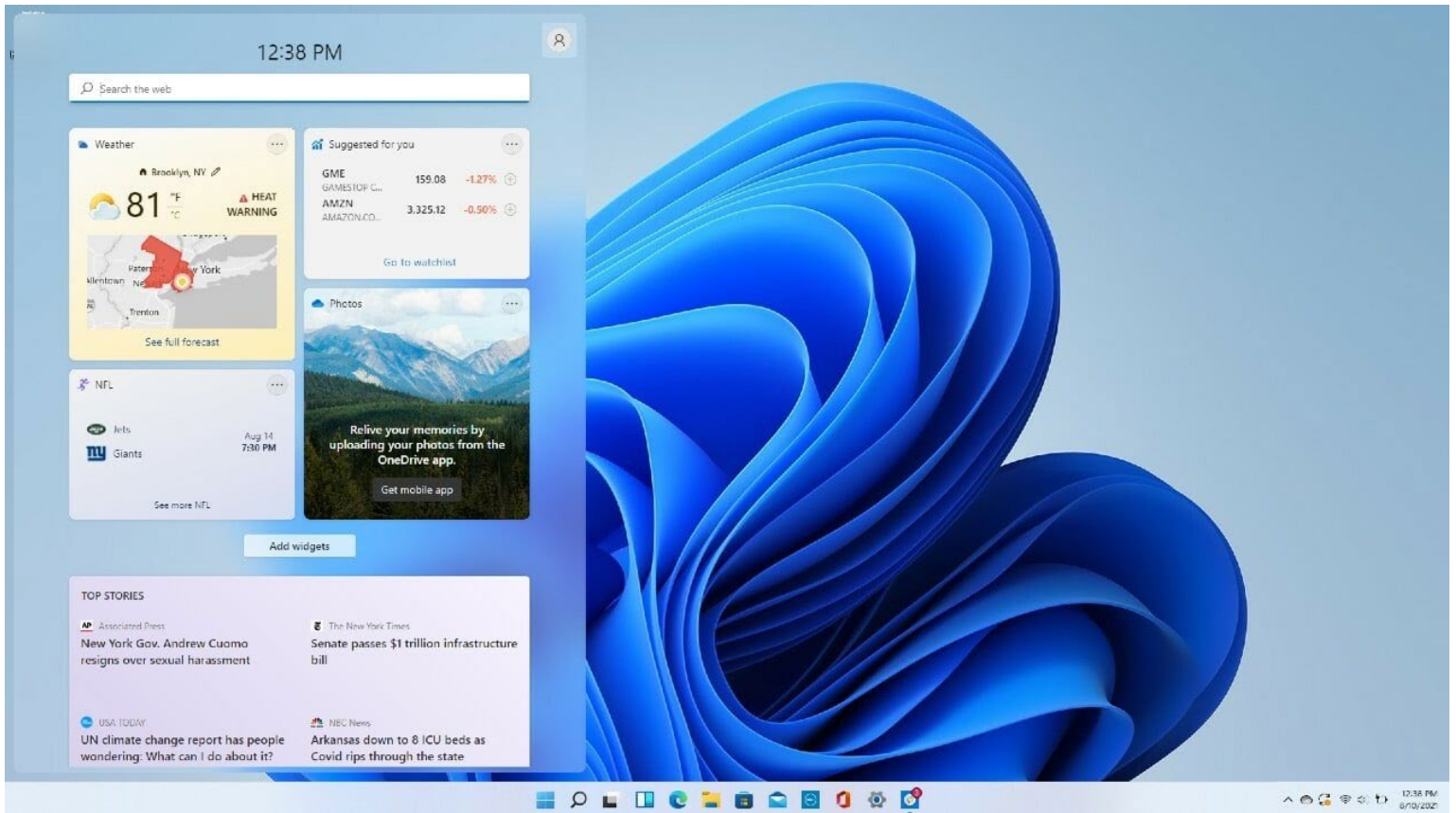
You may have used dark mode in Windows 10, lessening brightness and its possible effect at reducing eye strain, but at times this feature did not work consistently across browsers and apps. Windows 11's dark mode is easier to find and turn on compared to Windows 10 (Just go to your Settings menu and find "Personalization").

As well, you can find more accessible options for your display, such as "Contrast themes" that can help people living with low vision and light sensitivity.



Widgets

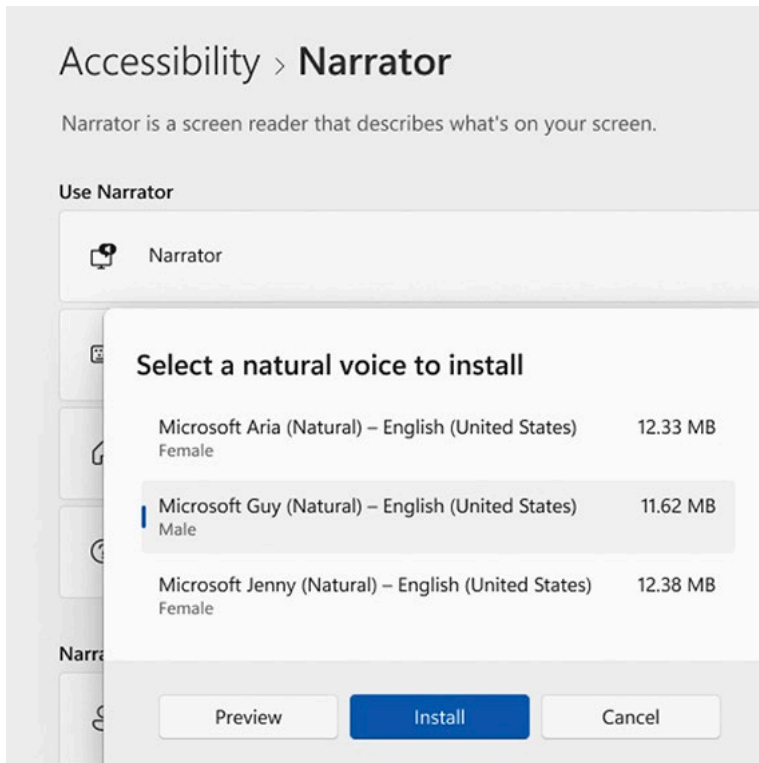
Windows 11 widgets offer a range of benefits, enhancing your productivity and keeping you informed in real-time. These customizable and interactive mini-applications can be placed on your desktop or snapped into the taskbar, providing quick access to relevant information. With widgets, you can effortlessly stay updated with the latest news, weather forecasts, and stock market updates. You can also keep track of your calendar appointments, to-do lists, and upcoming events, ensuring you never miss an important task. Widgets can display live data such as system performance metrics, allowing you to monitor key information at a glance. Furthermore, Windows 11 widgets can be personalized to suit your preferences, ensuring that you have the information you need, right at your fingertips.



More options for accessibility

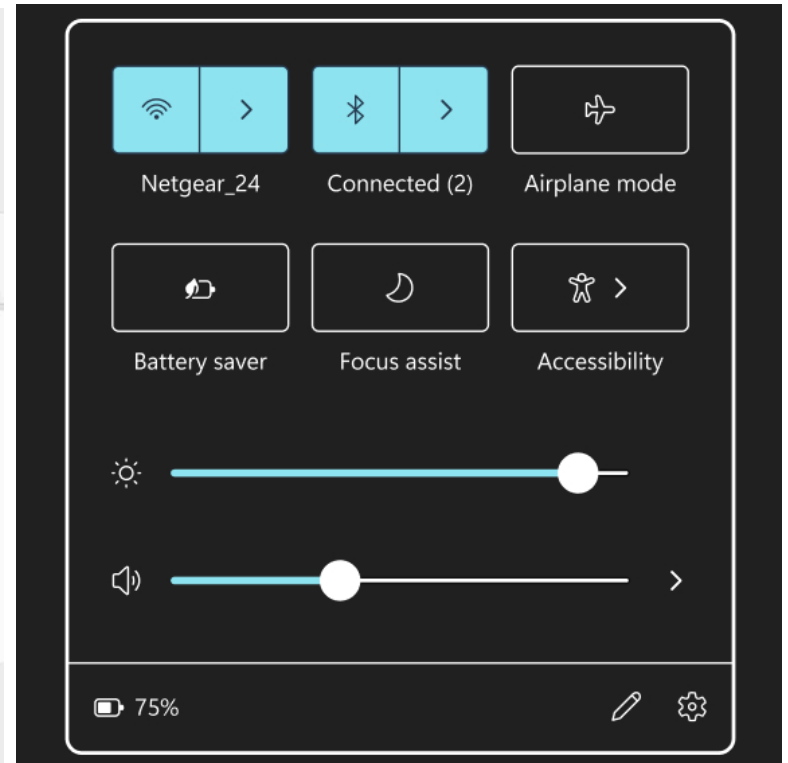
Windows 11 has other features that can make it more useable and flexible in accordance with different needs. Microsoft proclaims Windows 11 to be the “most inclusively designed version of Windows yet”; it has a built-in screen reader, live captioning, voice access, and more.

While some of these features were available in Windows 10, there are now more options than ever!



Narrator

Experience the power of Narrator, the built-in screen reader in Windows, which enables you to hear the contents of your screen. Narrator simplifies navigation, providing a clear and concise description of on-screen elements using a natural, human-like voice. It also offers compatibility with supported braille devices, allowing users to read and understand content through touch. With Narrator, Windows ensures an inclusive computing experience by making information accessible to individuals with visual impairments.



Colour Control

Adjust for light and color sensitivity with Windows 11 Dark and Contrast themes. Whether you are sensitive to light or work long hours in front of a screen, you can reduce screen brightness, increase contrast, and never sacrifice aesthetics or quality.

Accessibility > Audio

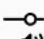
Make your device easier to hear or use without sound.

 **Mono audio**
Combine left and right audio channels into one.

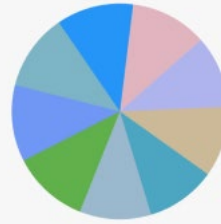
 **Flash my screen during audio notifications**

Related settings

 **Sound**
Volume levels, output, input, balance level, sound devices

 **App volume and device preferences**
Volume levels per app, speakers

Color filter preview



Color filters

- Red-green (green weak, deuteranopia)
- Red-green (red weak, protanopia)
- Blue-yellow (tritanopia)
- Grayscale
- Grayscale inverted
- Inverted

Single-Channel Audio

Experience enhanced audio accessibility with Windows 11 Mono Audio. This feature combines the left and right stereo audio channels into a single channel, allowing you to hear all audio content in a way that suits your needs. By merging the audio channels, Windows 11 ensures that individuals with hearing impairments or mono audio preferences can still fully enjoy and comprehend the sounds from their computer. Whether it's music, videos, or other multimedia, Mono Audio in Windows 11 provides an inclusive audio experience tailored to your preferences.

Colour Filters

Windows 11 color filters are designed to assist individuals with color blindness by helping them differentiate between subtle color changes and see the complete picture. These filters are specifically tailored to accommodate different types of color blindness, allowing users to adjust the display settings to suit their specific needs. By applying color filters, Windows 11 ensures that individuals with color vision deficiencies can perceive visual content more accurately, enabling a more inclusive and accessible computing experience.



Focus Sessions

Build healthy digital habits and boost productivity with Windows 11 focus sessions. Focus sessions turns on Do Not Disturb, turns off task bar badges, and integrates with your clock to launch a timer that helps you focus and reminds you to take breaks.



Eye Control

With Windows 11 eye control, you can effortlessly navigate your computer and applications using just your eyes. This innovative feature enables users to interact with their PC through eye movements, providing a convenient and hands-free method of control. By tracking your eye movements, Windows 11 allows you to move the cursor, perform clicks, and execute various commands, all without the need for a traditional mouse or keyboard.

Integrating with MS 365 apps to support remote work.

Compared to Windows 10, Windows 11 is better for remote and hybrid environments. For example, Microsoft Teams now has a dedicated icon in the taskbar. And with Teams available by default, Windows 11 supports background blur, eye contact adjustments for meetings, and automatic framing.

Improved performance and security

Perhaps the most important change is that Windows 11 is built to be more secure than its predecessors. As the newest operating system, Windows 11 now gets the majority of attention from Microsoft when it comes to future updates.

Enhanced identity protection, simplified password management, and new features like Smart App Control, which helps prevent scripting attacks and protect users from malware and phishing, makes Windows 11 the most secure option for PC users in the OISE community.