

Promising Practices

Inclusive Programming and Ready-to-Move Child Care

ECER Report Review
George Brown College
April 25, 2024

Inclusive Programming Required



- In Manitoba, every licensed child care space is an inclusive space
- All licensed child care facilities must:
 - Have a written inclusion policy
 - Provide a daily program that is inclusive of children's diverse needs
- To support facilities in this requirement, we offer various programs and initiatives

Inclusion Support Program (ISP)



- The ISP assists child care facilities to better support children with additional support needs, by removing or reducing barriers to allow children to meaningfully participate in daily programming and activities with their peers.

Services and supports offered:

- Child Development Services
- Staff Enhancement Grant
- Specialized Equipment Grant
- Specialized Training

Child Development Services

- The Diversity & Inclusion Unit is a specialised team providing both case management and child development services to facilities.
- Case management services include eligibility, observations, assessments and service planning.
- CD Services focuses on the facility's environment (as the 3rd teacher), programming, staff-child interactions/dynamics, diversity and inclusive practices. CD services are not child specific, and interventions are intended to adapt environment and programming to better meet the needs of all children in the group/room.
- Child Development Services may include customized workshops and training to increase child care staff capacity with a range of topics including anti-bias practices; leadership support; attachment and trauma; mental health;

CW-ELCC Funded Initiatives

Manitoba funds a variety of third-party initiatives to build staffing capacity:

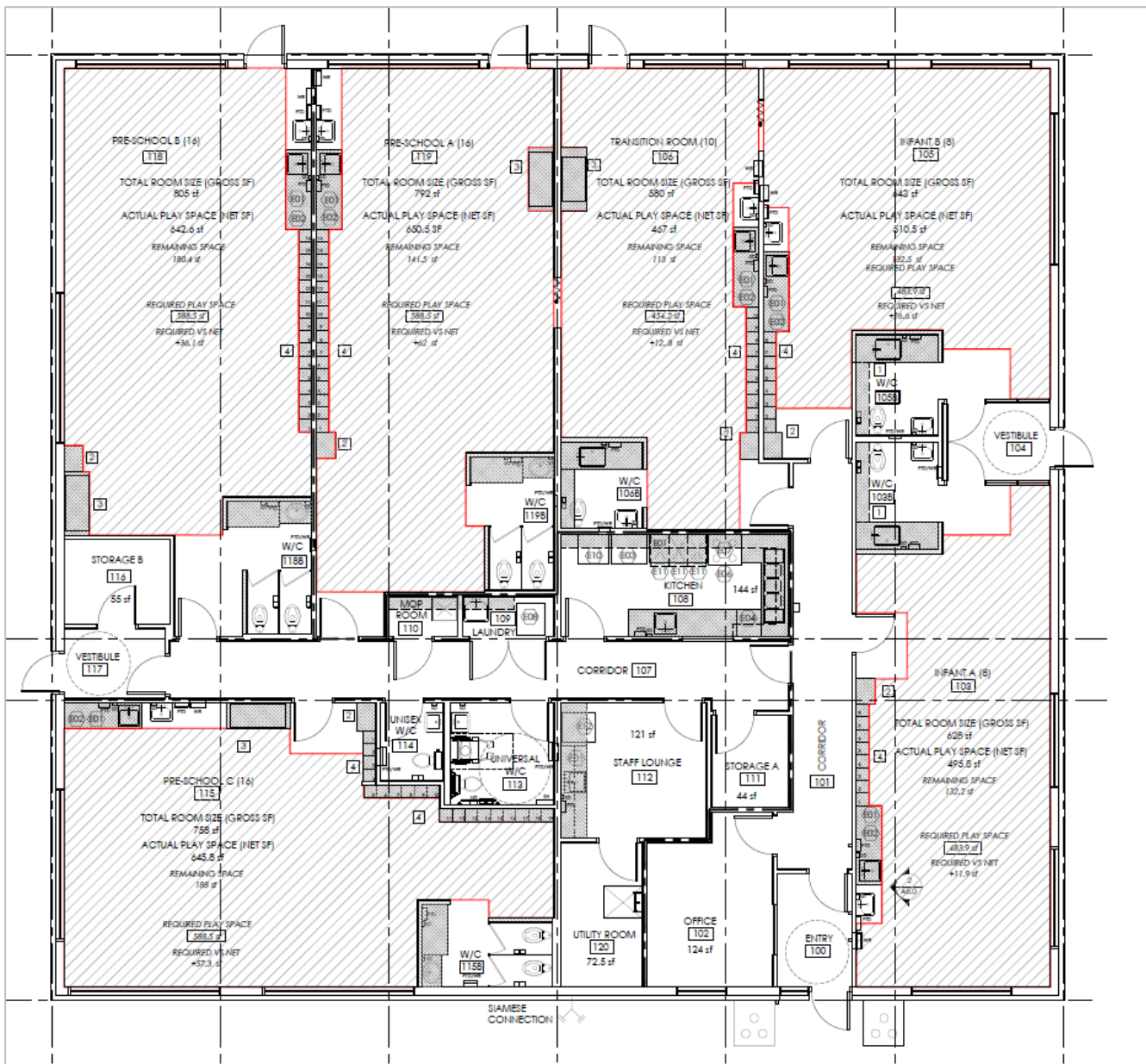
- Abecedarian Approach model & expansion
- Supporting newcomer families
- Behaviour support program
- Fulfilling Potential Workshops - for staff working with children with Autism
- Indigenous Programming grant – training and resources to promote and enhance cultural awareness.
- Attachment and Trauma informed care
- Science of Early Childhood Development

Manitoba's Ready-To-Move (RTM) project

- Innovative approach for building high-quality child care spaces under expedited timelines.
- Hybrid construction technology leverages economies of scale to build facilities under controlled conditions before being moved on site, assembled and placed on permanent foundation.
- Collaboration between government, municipalities and Indigenous Governing Bodies to address child care needs in remote/rural regions.
- Builds fully funded under Canada-Wide Agreement in exchange for serviced land, 15 years of free rent for operator and general maintenance. Facilities are owned by local municipality/First Nation.

Manitoba's Ready-To-Move (RTM) project

- Pilot rolled out in fall 2022 in 9 communities in Winnipeg Metropolitan Region.
- EOI to invite further communities issued in November 2022, selection of successful projects using Child Care Demand Model in early 2023.
- Developing a total of 25 new facilities with 1,970 spaces in rural and First Nations communities across the province, at cost of \$120M.
- RTM construction timelines of 6 to 9 months, while traditional builds take between 12 and 18 months
- Ten centres have opened (740 spaces), two are scheduled to open in May 2024 (148 spaces), ten are under construction to complete by October 2024 (830 spaces), followed by three more in April 2025 (252 spaces).



74-space build Floor Plan





