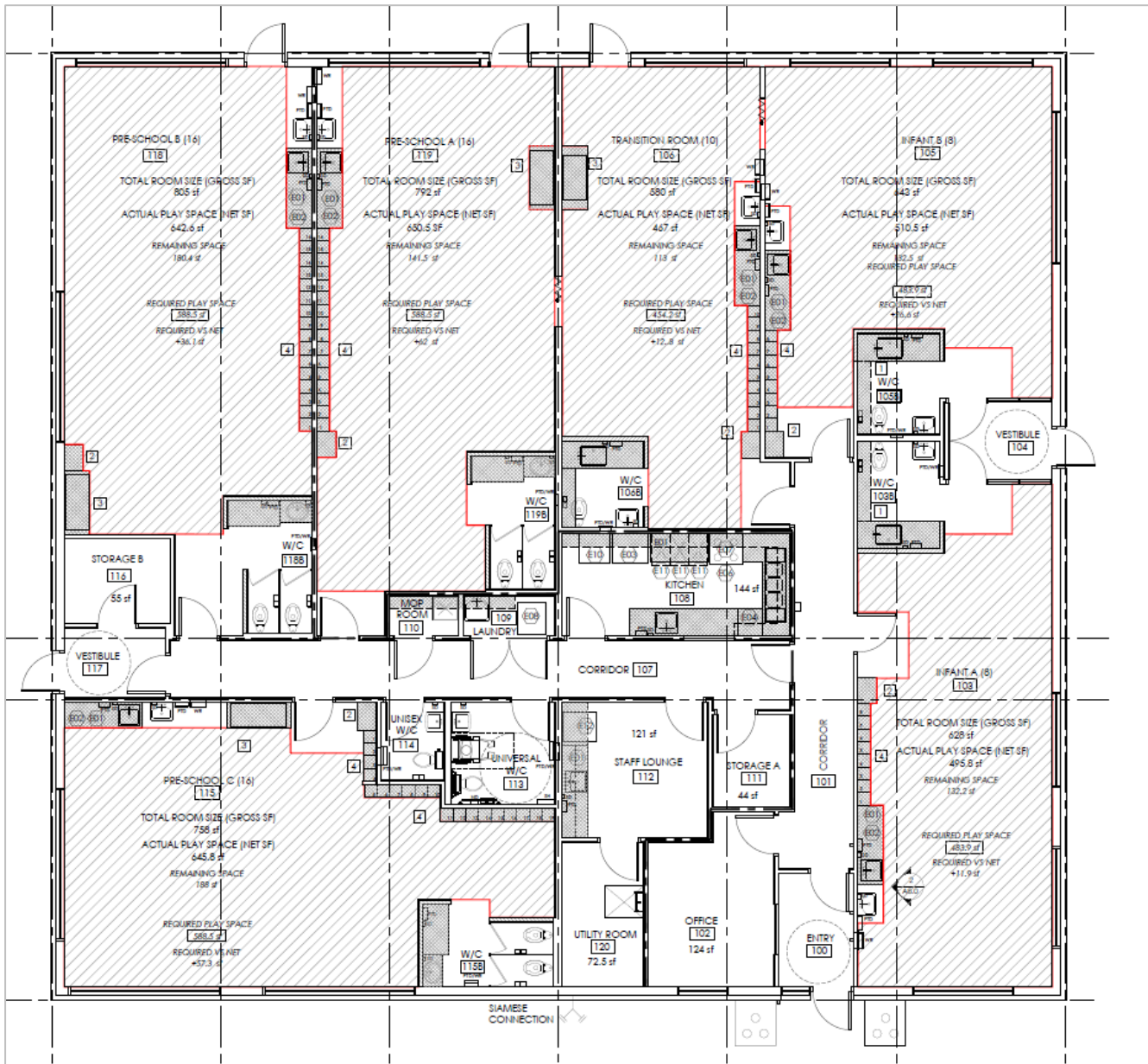


Manitoba's Ready-To-Move (RTM) project

- Innovative approach for building high-quality child care spaces under expedited timelines.
- Hybrid construction technology leverages economies of scale to build facilities under controlled conditions before being moved on site, assembled and placed on permanent foundation.
- Collaboration between government, municipalities and Indigenous Governing Bodies to address child care needs in remote/rural regions.
- Builds fully funded under Canada-Wide Agreement in exchange for serviced land, 15 years of free rent for operator and general maintenance. Facilities are owned by local municipality/First Nation.

Manitoba's Ready-To-Move (RTM) project

- Pilot rolled out in fall 2022 in 9 communities in Winnipeg Metropolitan Region.
- EOI to invite further communities issued in November 2022, selection of successful projects using Child Care Demand Model in early 2023.
- Developing a total of 25 new facilities with 1,970 spaces in rural and First Nations communities across the province, at cost of \$120M.
- RTM construction timelines of 6 to 9 months, while traditional builds take between 12 and 18 months
- Ten centres have opened (740 spaces), two are scheduled to open in May 2024 (148 spaces), ten are under construction to complete by October 2024 (830 spaces), followed by three more in April 2025 (252 spaces).



74-space build Floor Plan





