

The Early Childhood Education Report 2020

Dr. Emis Akbari, Ph.D.

Professor & Program Coordinator

School of Early Childhood | George Brown College

Senior Policy Fellow | Atkinson Centre

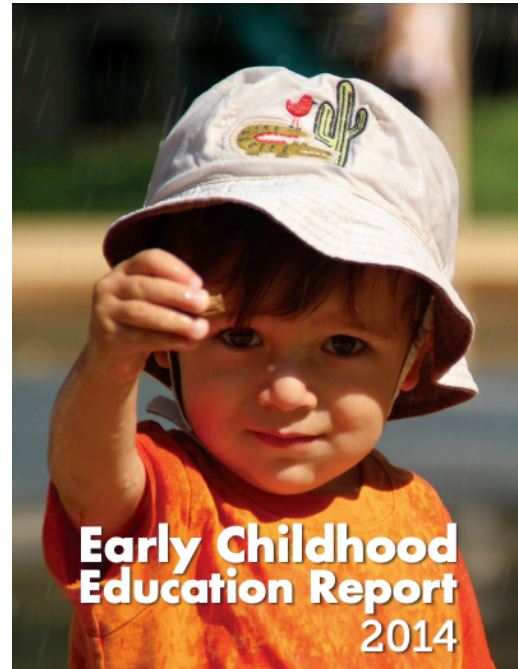
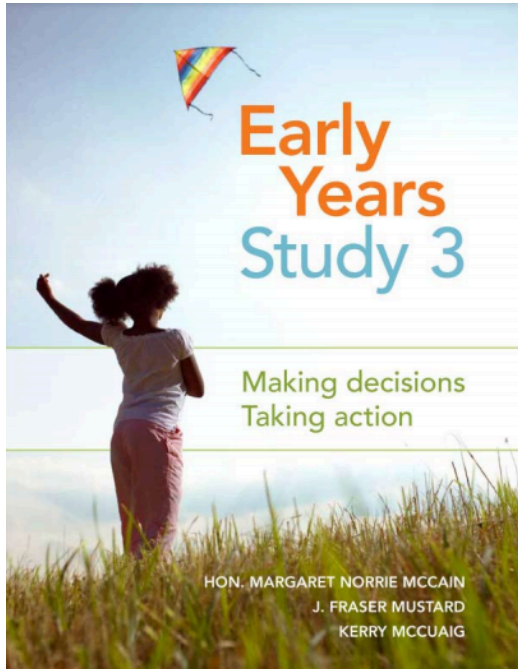
Adjunct Professor | Applied Psychology and Human

Development | OISE | University of Toronto

Authors: Emis Akbari, Kerry McCuaig, Daniel Foster



The Early Childhood Education Report 2020 is the 4th assessment of provincial and territorial frameworks for early childhood education and care services (ECEC) in Canada.



EARLY CHILDHOOD EDUCATION REPORT BENCHMARKS OF QUALITY

GOVERNANCE		FUNDING		ACCESS		LEARNING ENVIRONMENT		ACCOUNTABILITY		5 CATEGORIES
	PTS		PTS		PTS		PTS		PTS	
ECEC under common department/ministry	.5	At least 2/3 of child care funding goes to program operations	1	Full-day Kindergarten	1	ECEC curriculum framework	.25	Current and posted annual progress reports	1	21 BENCHMARKS 15 POINTS
ECEC supervisory unit	.5	Managed salary and fee scale in licensed child care	1	50% of 2- to 4-year-olds regularly attend an ECEC program	1	ECEC curriculum framework use is mandatory	.25	Facilities standards for ECEC programs include Kindergarten	1	
Common ECEC policy framework	1	At least 3% of overall budget devoted to ECEC	1	Funding conditional on including children with special needs	1	Alignment of ECEC programs with Kindergarten	.5	Population measures for preschool collected and reported	1	
Common local authority for ECEC administration and delivery	1		↓		↓	At least 2/3 of staff in programs for 2- to 4-year-olds are qualified	.5		↓	
	↓					Kindergarten educators require ECEC qualifications	.5			
						Salaries of ECEs at least 2/3 of teachers	.5			
						ECE professional recognition required	.25			
						ECE professional development required	.25			
							↓			
	3	+	3	+	3	+	3	+	3	

The ECER 2020

Captures the impact of the 2017 Multilateral Agreement and associated Bilateral Agreements



Based on pre-pandemic realities
Baseline for the impact of COVID-19 on the sector

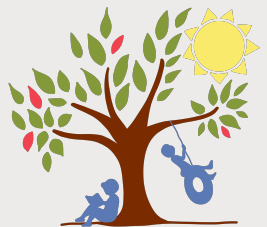
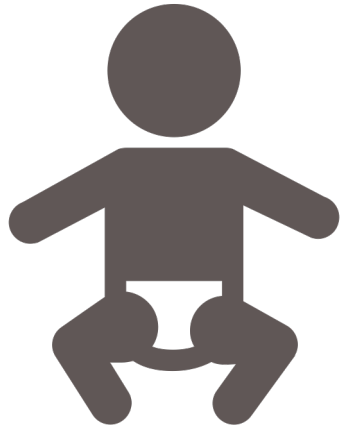


Baseline for the impact of
Budget 2021



Workforce
Training, Compensation, PD





Access

PERCENT OF CHILDREN ATTENDING SCHOOL-OPERATED EARLY CHILDHOOD PROGRAMS

Province/ Territory	4-year-old Population	Percent Attending 4-year-old PreK		5-year-old Population	Percent Attending 5-year-old Kindergarten	
		Full Day Prekindergarten	Half Day Prekindergarten		Full day Kindergarten	Half day Kindergarten
NL ^a				4,690	97%	
PE ^a				1,616	94%	
NS ^b	8,850	52%		8,776	99%	
NB				7,333	100%	
QC ^c	90,703	10%		91,893	96%	
ON	147,823	87%		149,359	90%	
MB	17,566		15.3%	17,758		86%
SK	31,295 ^d		16%	15,720		91%
AB				54,999		65%
BC				47,633	98%	
NU				891	9%	81%
NT	629	88%		606	98%	
YT ^e	472		14%	487	89%	

a NL and PE's plans for Prekindergarten were put on hold due to pandemic

b NS Pre-Primary enrolment was 75% in 2021

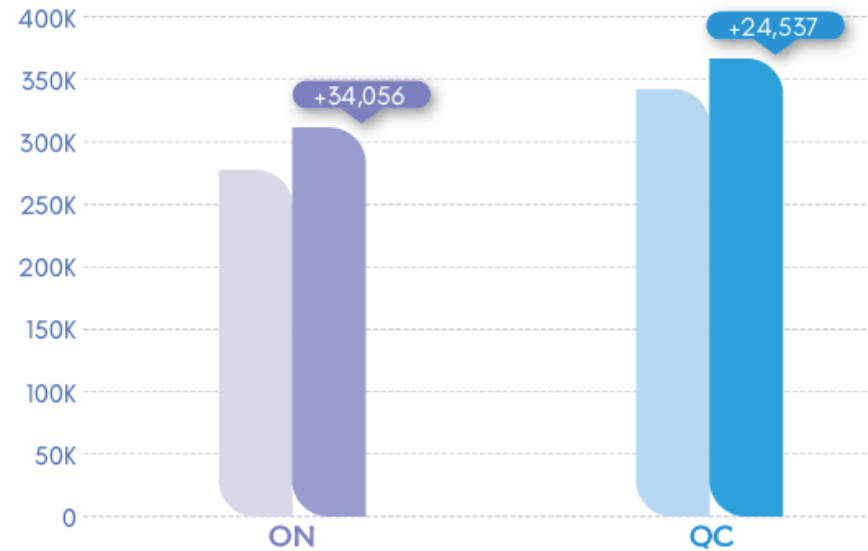
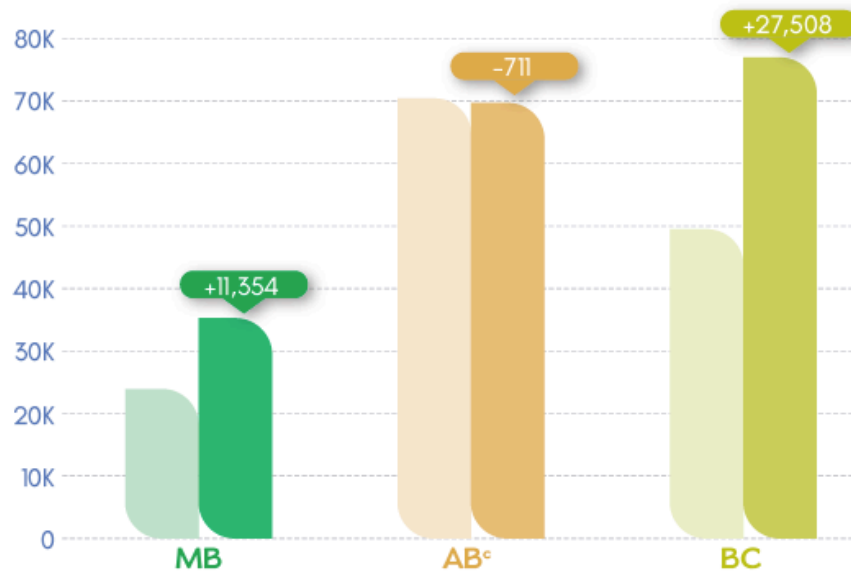
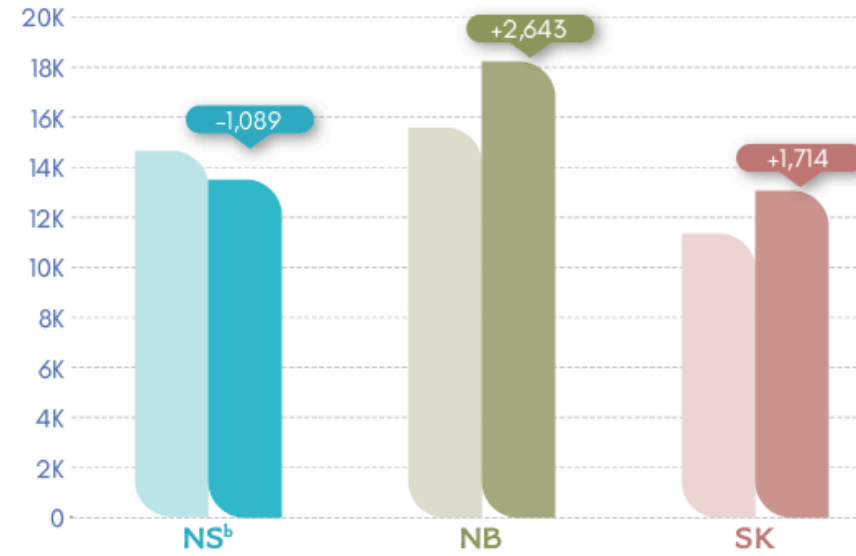
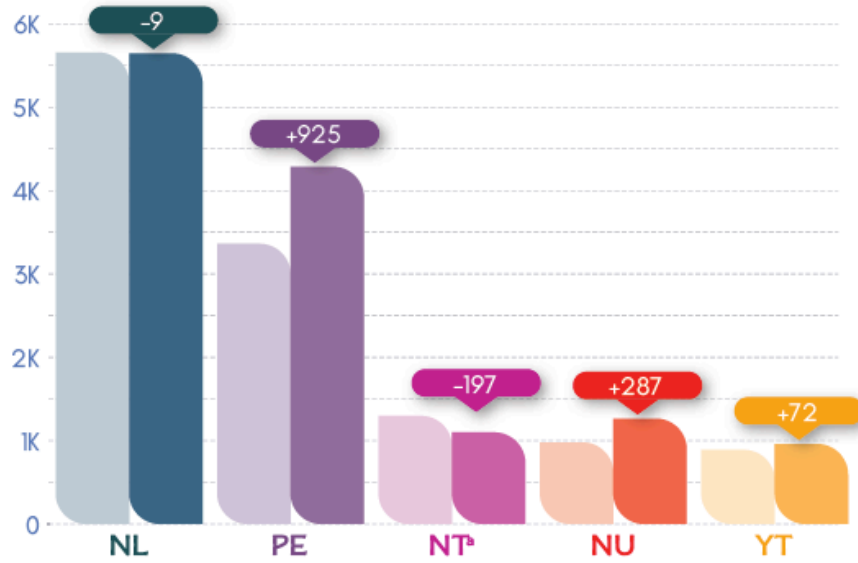
c QC committed to full-day Prekindergarten by 2023

d SK population and Prekindergarten enrolment figures include 3- and 4-year-old children

e YT to begin full-day Early Kindergarten for 4-year-old children in 2021 school year.



CHANGE IN THE NUMBER OF CHILD CARE SPACES (0 TO 5 YEARS) BY PROVINCE/TERRITORY 2017 • 2020



Includes centre-based, family and licensed child care for Kindergarten-age children.

a NT transfer of 4-year-olds into Junior Kindergarten

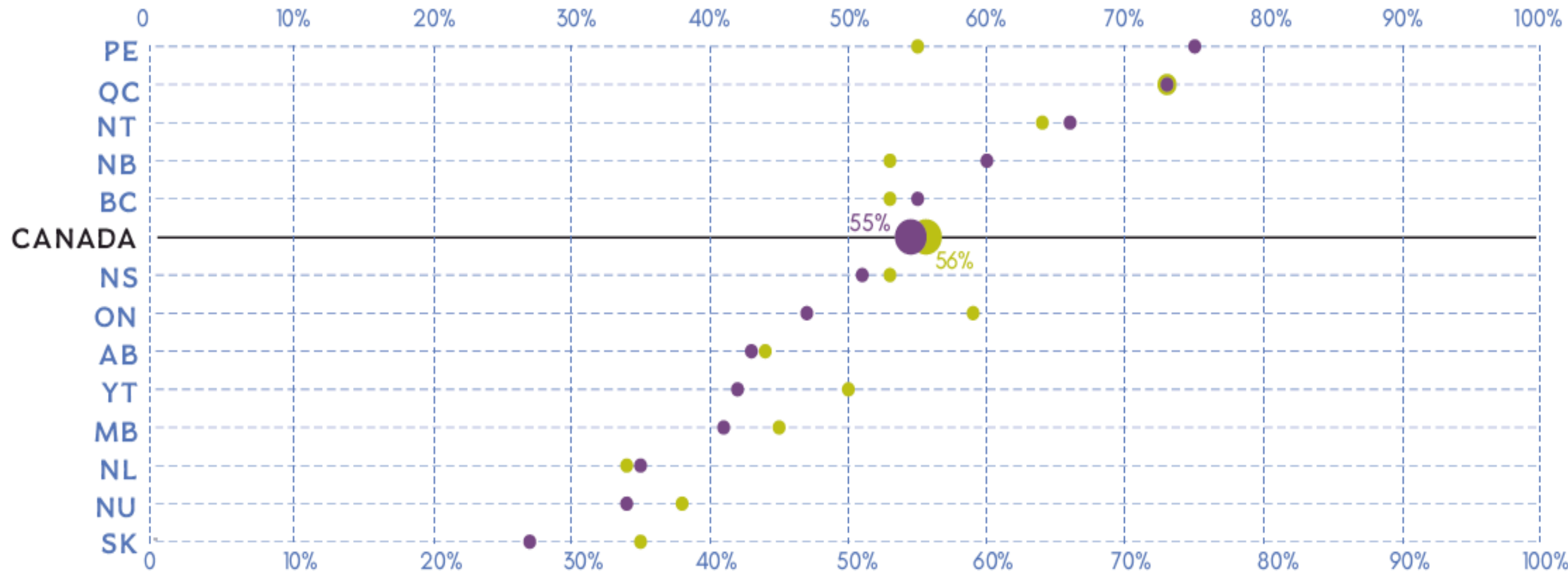
b NS transfer of 4-year-olds into pre-primary programs

c AB does not include children 2.8 to <5 years old enrolled in ECS programs provided under Alberta Education.



PERCENT OF 2- TO 4-YEAR-OLDS REGULARLY ATTENDING A GROUP EARLY CHILDHOOD PROGRAM BY PROVINCE/TERRITORY

2017 • 2020



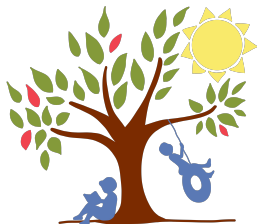
Numbers do not include children attending family day care.
 SK 2020 does not include children attending private/unregulated preschool.



**JURISDICTIONS WHERE PUBLIC
FUNDING FOR CHILD CARE IS
CONDITIONAL ON INCLUDING
CHILDREN WITH SPECIAL NEEDS**



- 01 PRINCE EDWARD ISLAND**
Early Years Centres only
- 02 MANITOBA**
In all publicly funded child care programs
- 03 ALBERTA**
Early Childhood Services programs only

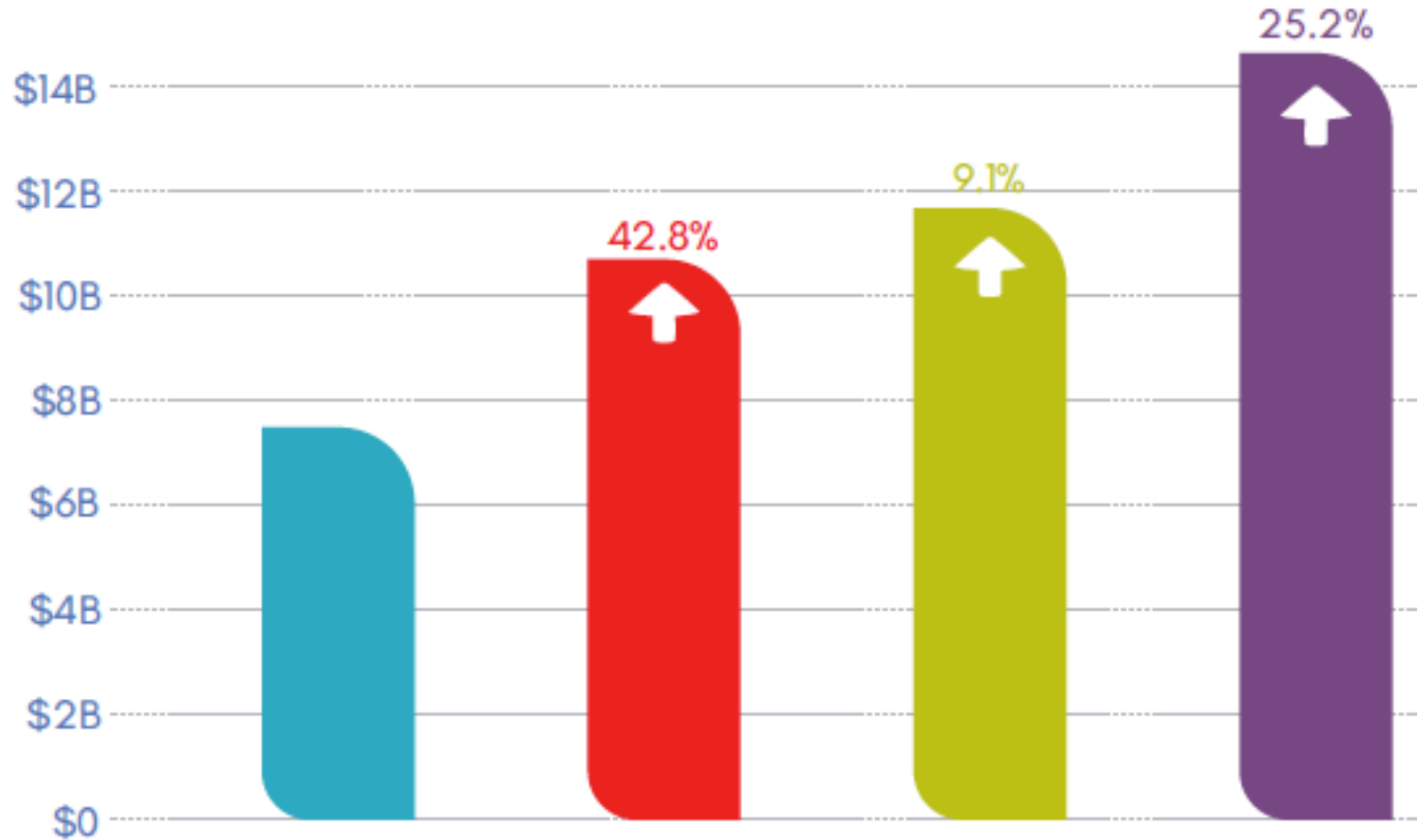


Funding



CHANGE IN TOTAL ECEC SPENDING

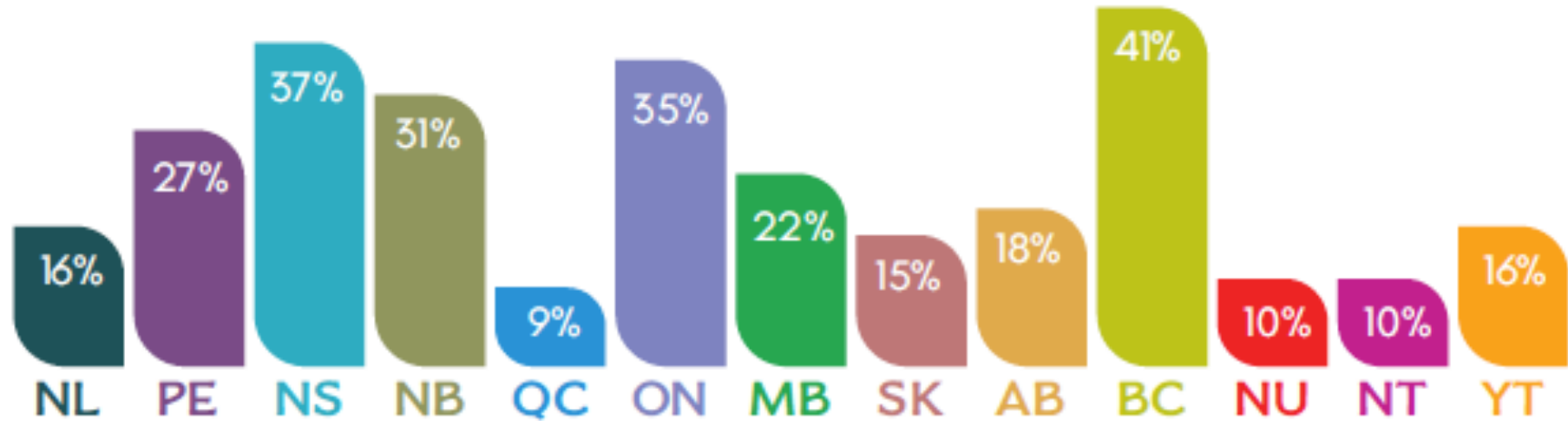
2011 • 2014 • 2017 • 2020



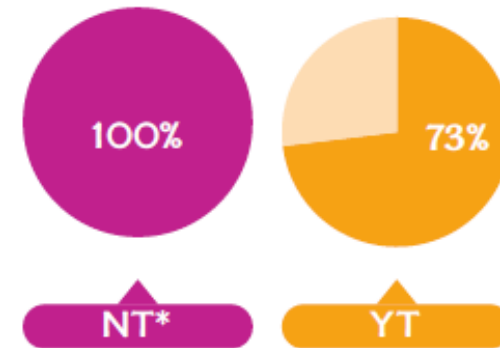
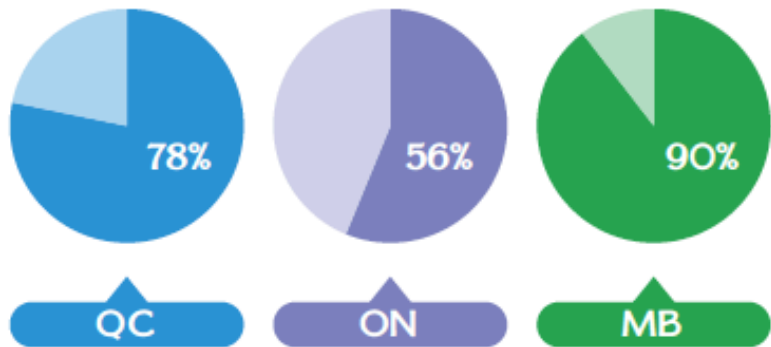
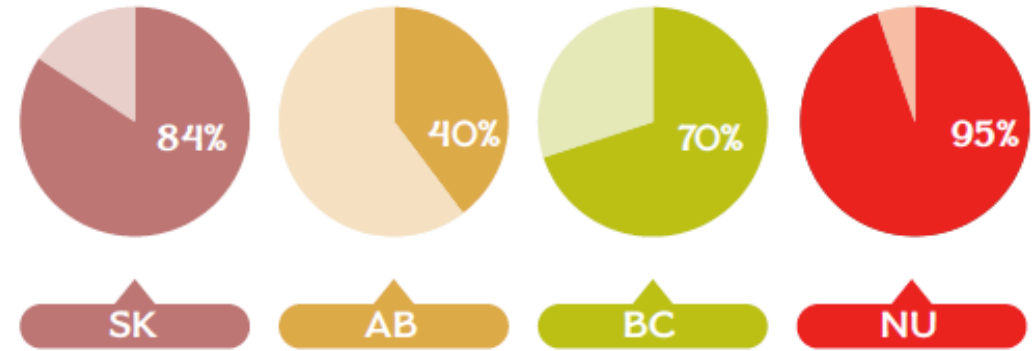
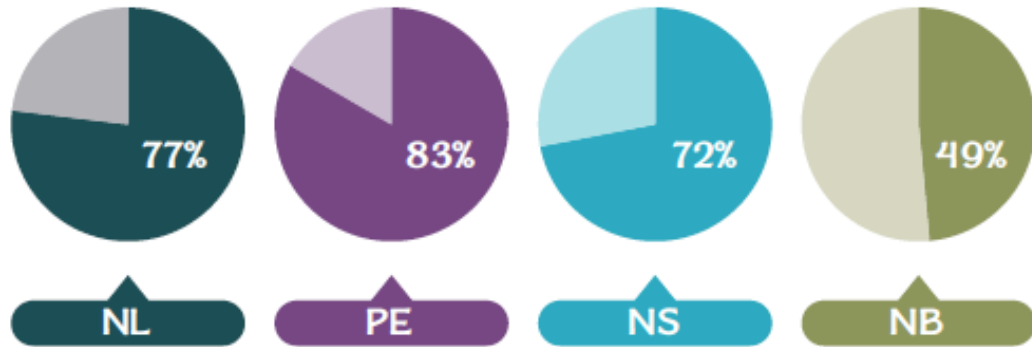
Percent reflects change in spending from previous ECER edition.



PERCENT INCREASE IN ECEC SPENDING BY PROVINCE/ TERRITORY FROM 2017 TO 2020



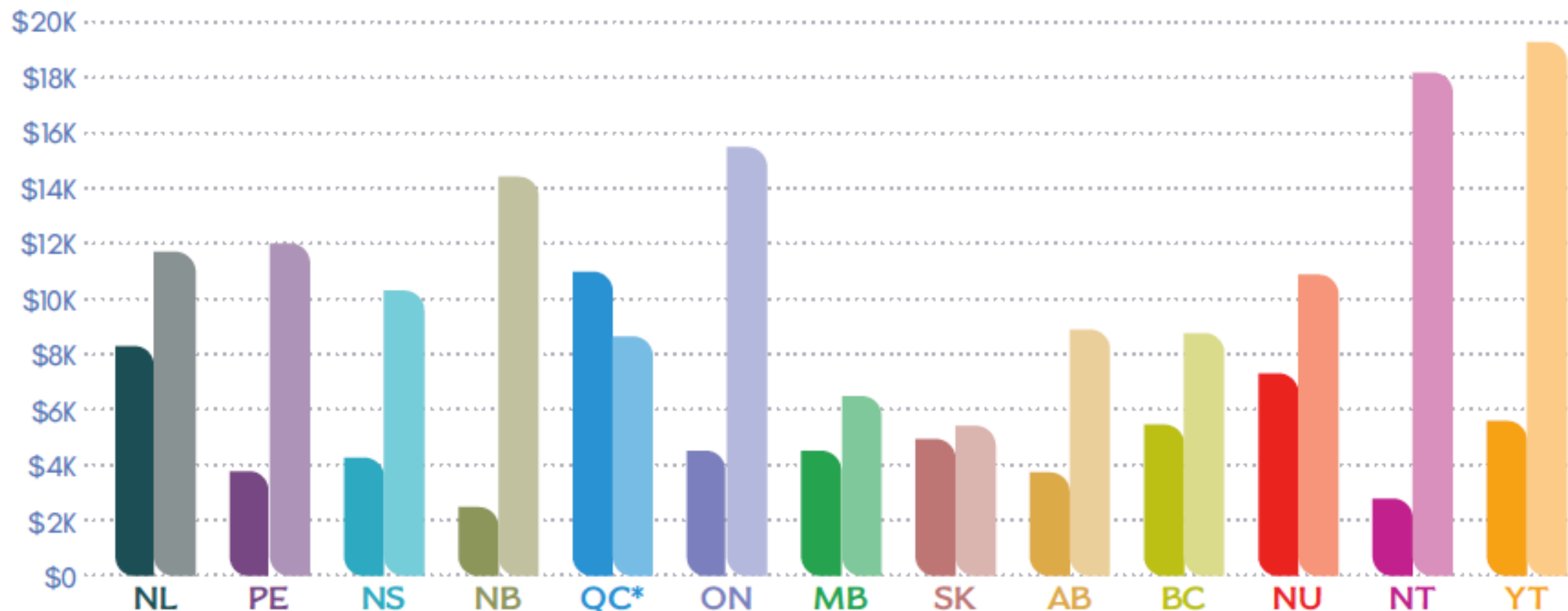
LICENSED CHILD CARE PROGRAM FUNDING VERSUS FEE SUBSIDY SPENDING



*All child care funding in NT goes to programming.



OPERATING EXPENDITURES PER CHILD CARE SPACE AND PER CHILD IN SCHOOL PROGRAMS



Calculation based on most recent available enrolment figures.

*QC does not include school-age child care. Funding only reflects spending on spaces for children 0 to <5.

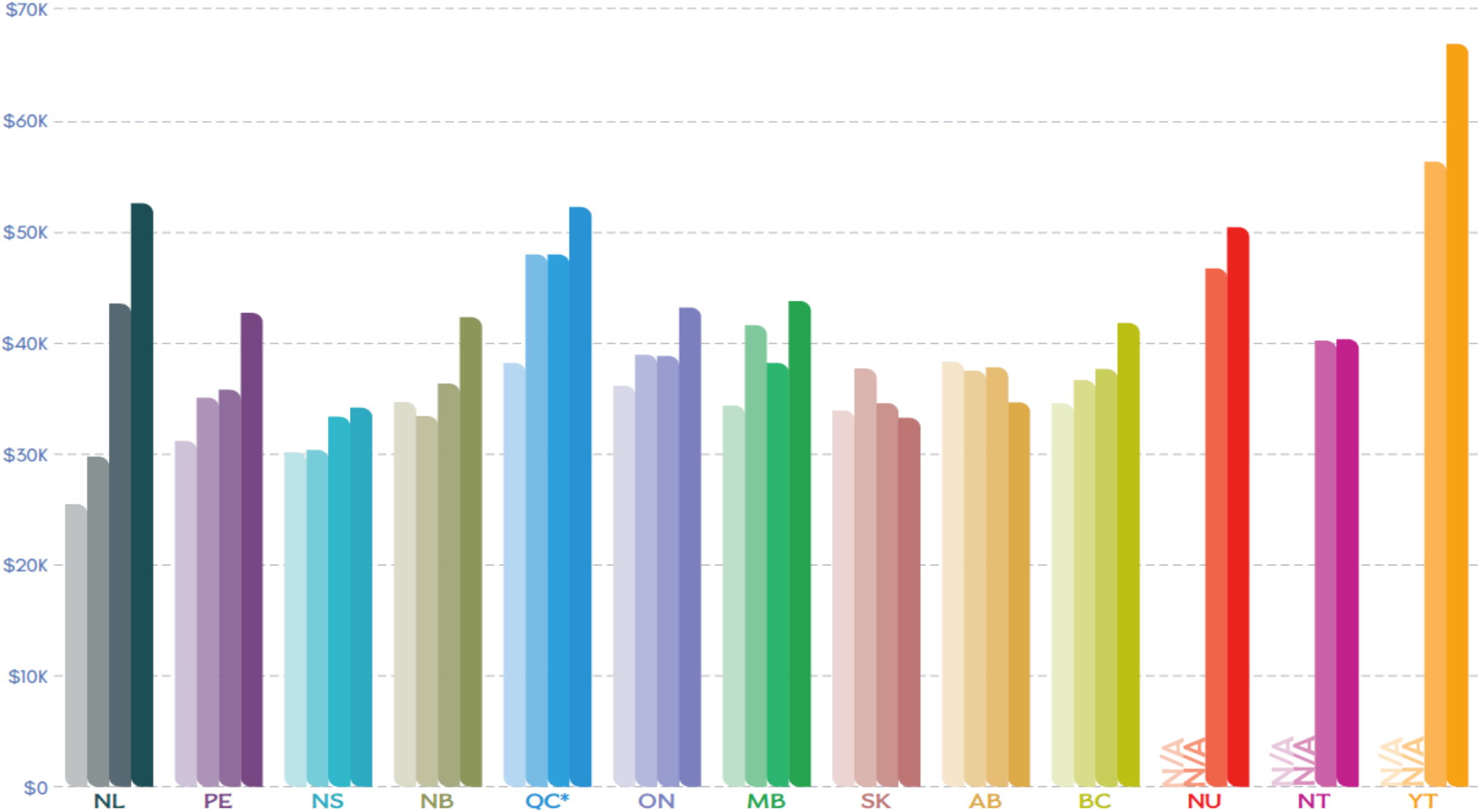


Workforce



CHANGE IN ECE SALARIES

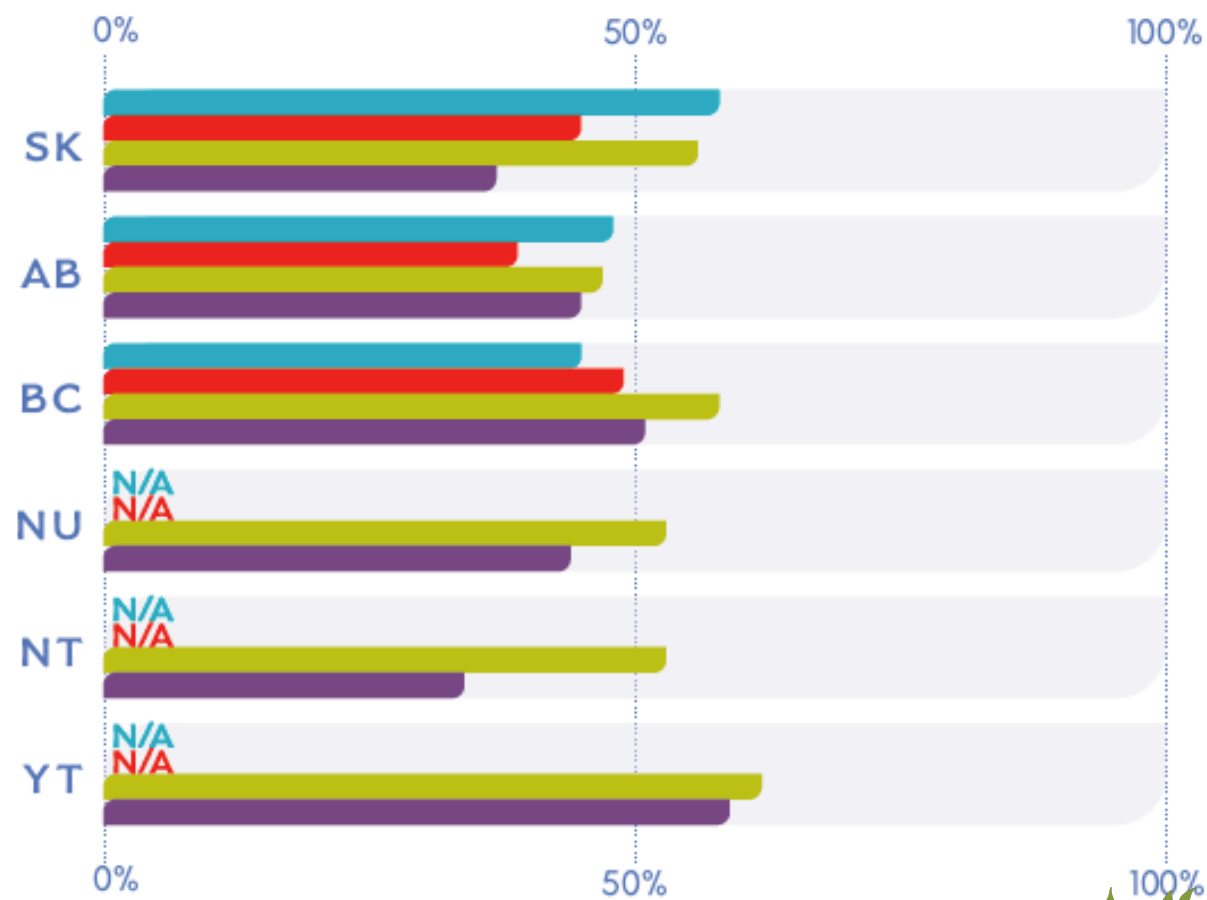
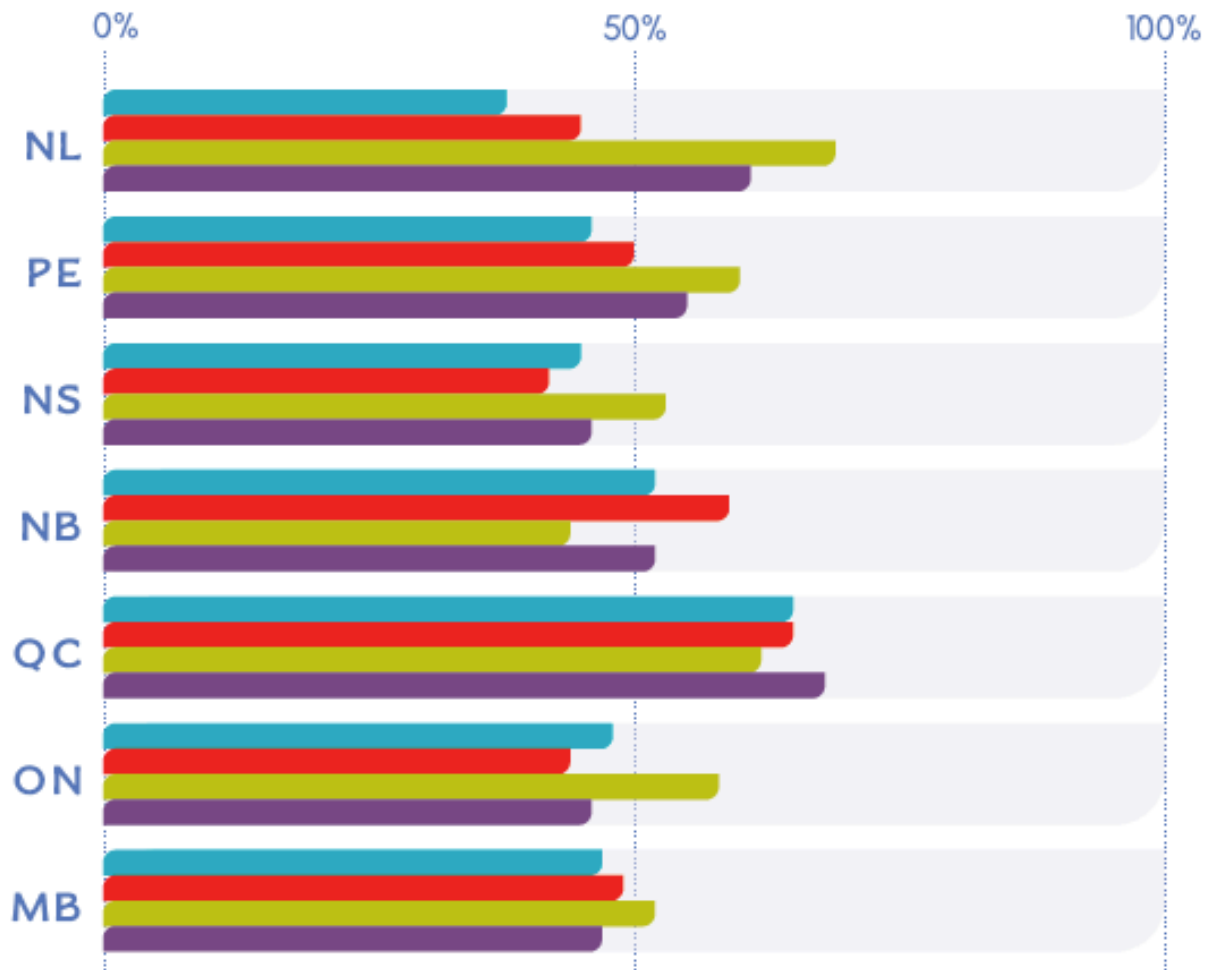
2011 • 2014 • 2017 • 2020



Reflects top salaries for qualified ECEs.

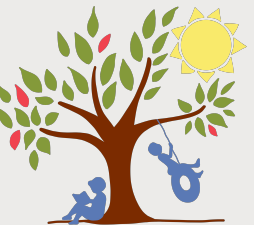
ECE SALARIES AS A PERCENT OF TEACHER SALARIES

2011 • 2014 • 2017 • 2020



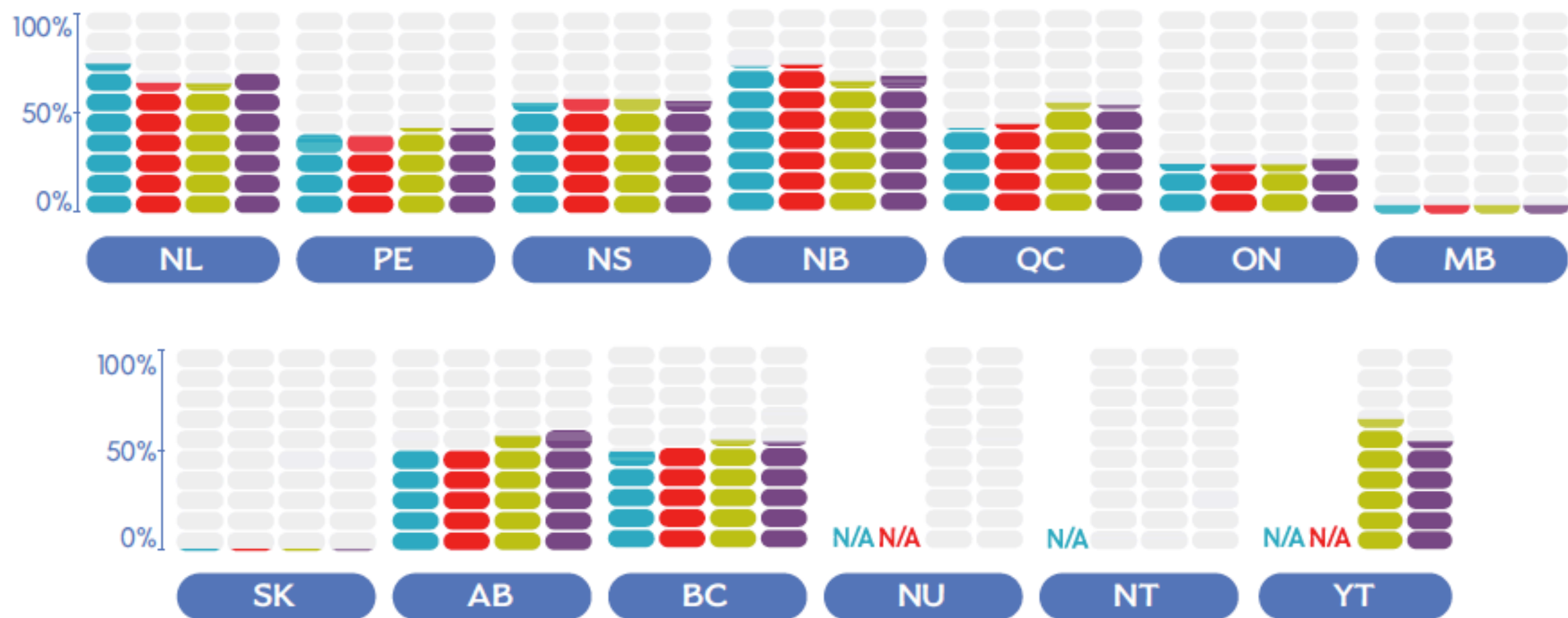


Auspice



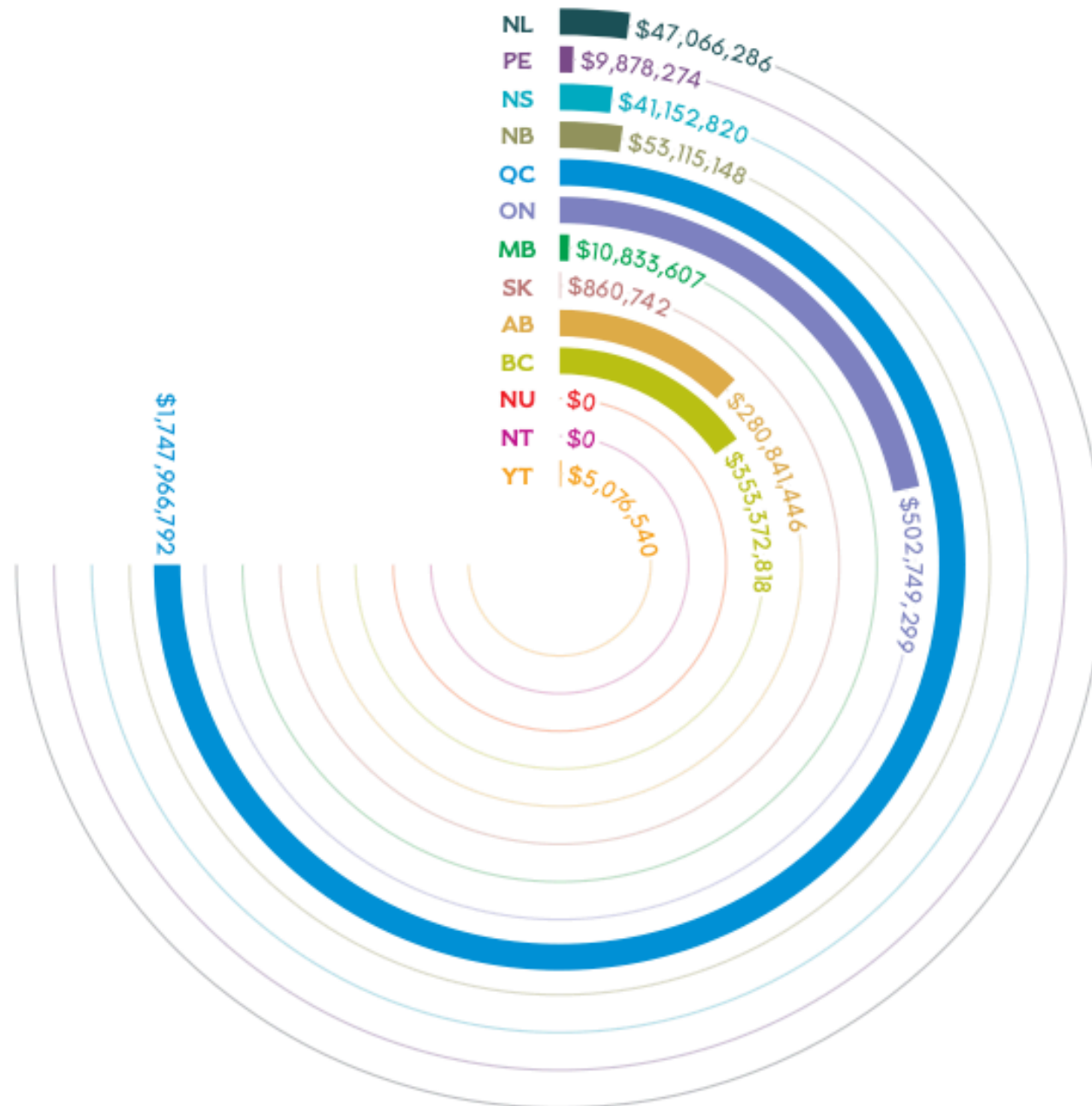
PERCENT OF FOR-PROFIT VS NON-PROFIT CHILD CARE BY PROVINCE/TERRITORY (0 TO 12 YEARS OF AGE)

2011 • 2014 • 2017 • 2020



SK, NU, and NT do not fund for-profit child care programs. QC figures do not include school-aged child care.

SPENDING ON FOR-PROFIT CHILD CARE BY PROVINCE/TERRITORY (2020)



'Educating Down'

Moving Forward

LOOKING AHEAD

MANY JURISDICTIONS HAVE CHOSEN SCHOOLS AS THEIR BASE FOR PRESCHOL



01



Quebec committed to universal Full Day Pre-K by 2023

02



Yukon Full Day Pre-K in September 2021

03



Newfoundland and PEI 4-year-old to Pre-K

04



Nunavut piloting FDK

Yukon Territory New Leader in Early Learning

Road to Universal Access

4 Moved oversight to Education Ministry



5 Introducing new curriculum and monitoring.



3 Increased funding for inclusion



2 Parent fees reduced by \$700/month

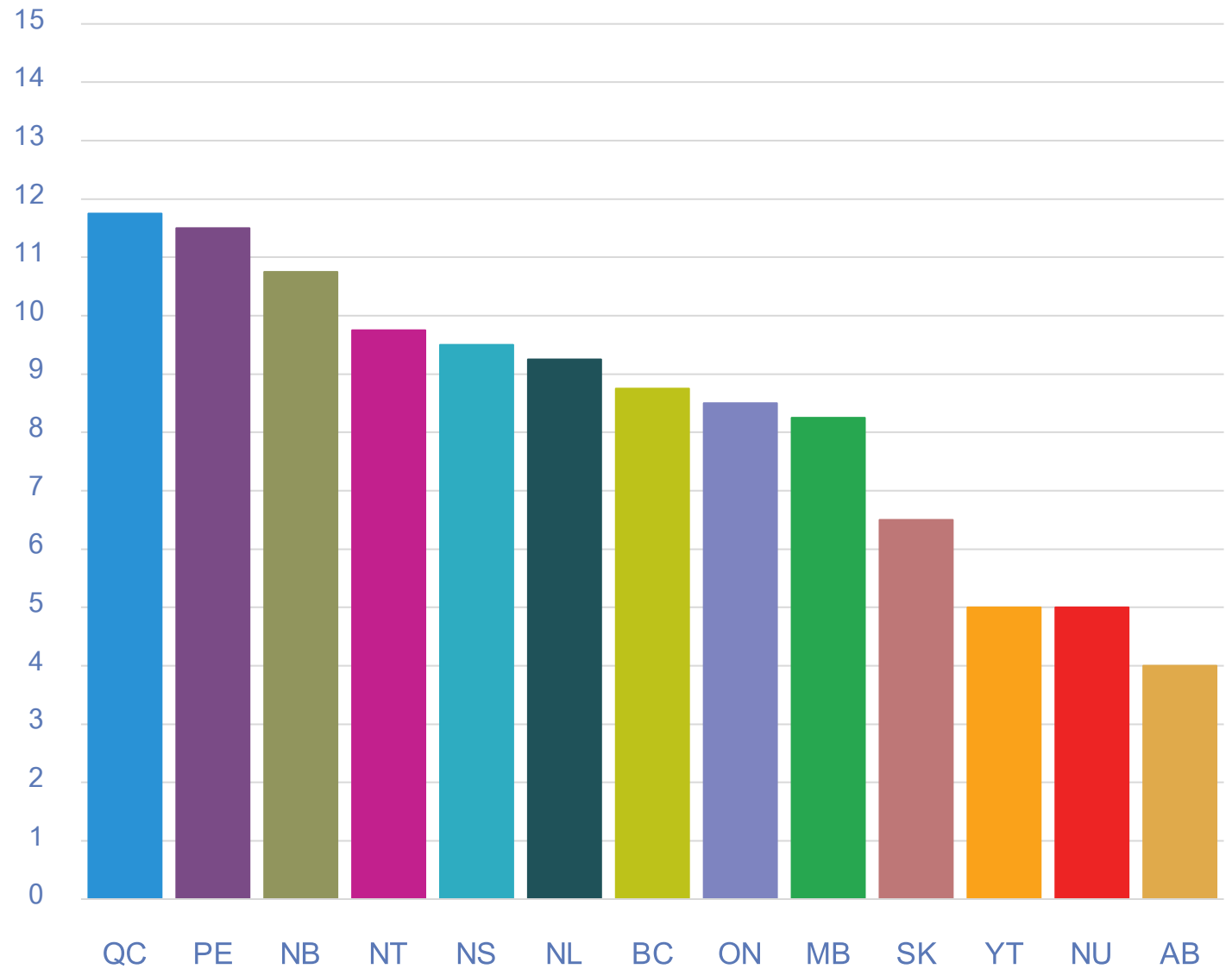


1 \$17.11 wage top up for ECEs

EARLY CHILDHOOD EDUCATION REPORT 2020



Results at a Glance



For more details, log on to ECEReport.ca

THANK YOU



LAWSON
FOUNDATION

MOM
Margaret & Wallace McCain
Family Foundation

ATKINSON
FOUNDATION

Atkinson
Centre

UNIVERSITY OF TORONTO
OISE | ONTARIO INSTITUTE
FOR STUDIES IN EDUCATION

emis.abkari@georgebrown.ca