

The 13th Annual Summer Institute on Early Childhood Development

Growing ECE Access and Quality: Opportunities and Challenges

ALIGNING EARLY CHILDHOOD PEDAGOGY FROM PRESCHOOL TO KINDERGARTEN

CAROLYN SIMPSON, DIRECTOR OF EARLY CHILDHOOD DEVELOPMENT

JUNE 3, 2016



What is an Early Learning Framework?

The Organization for Economic Cooperation & Development (OECD) recommends that a curriculum framework is:

- ▶ flexible so that it can be adapted at the level of the individual program
- ▶ consistent with the broad vision, beliefs, values and principles of the jurisdiction
- ▶ dependent on well-trained and respected early childhood educators

What is an Early Learning Framework?

- ▶ “Early Learning” encompasses all of the activities, experiences and interactions that young children are involved in that expand their physical, creative, emotional, social, language and intellectual area of development.
- ▶ A “framework” provides the structure and identifies methodological approaches

The PEI Early Learning Framework

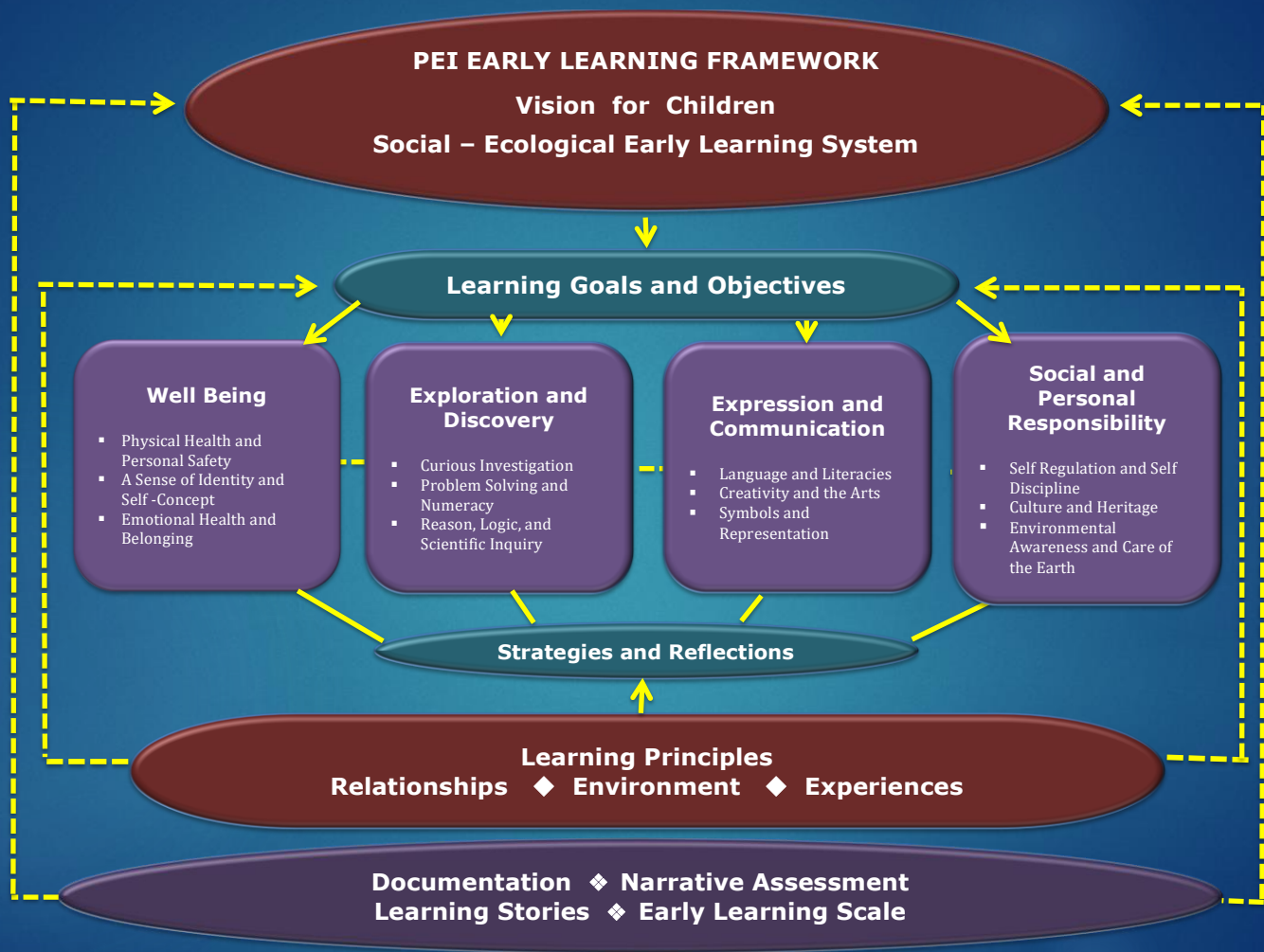


- ▶ For Early Years Centres
- ▶ Children from birth to four years old
- ▶ Builds on PEI Vision for Children
- ▶ Part of Preschool Excellence Initiative
- ▶ Linked to the PEI Integrated Kindergarten Curriculum
- ▶ Inspired and informed by what others have done

PEI Vision for Children

Children in PEI are healthy and happy, curious and creative, playful and joyous. They are loved and respected, and are safe and secure in their families, homes and communities. Children are our collective responsibility. They are valued for who they are today, and as the future parents and leaders of tomorrow.





An Ecological Perspective

- ▶ Based on research of Dr. Uri Bronfenbrenner
- ▶ Children are influenced by their families, their communities, their society
- ▶ Families, communities, and society are in turn influenced by children

AN ECOLOGICAL EARLY LEARNING SYSTEM

- ▶ Children are influenced by families and their early childhood educators
- ▶ Early Childhood Educators are influenced by children, by families, and by policies and practices in Early Years Centers
- ▶ Parents and families are influenced by their children, by the educators, and by the policies and practices of the Early Years Centers

Integrated Kindergarten Curriculum

- ▶ Built on the principles of early childhood education
- ▶ Early childhood educators transitioned to public school
- ▶ Pedagogical approach is similar
- ▶ Requires commitment
- ▶ Play is at the root
- ▶ A program still growing

Vision

“The Kindergarten program of Prince Edward Island fosters children’s growth and learning: socially, emotionally, intellectually, physically, and creatively, to become lifelong learners in an environment that is nurturing, play-based, and developmentally appropriate.”

Thank you

