

The background of the slide features a photograph of two young children sitting at a table, engaged in a painting activity. The child on the left is wearing denim overalls and has paint on their hands and clothing. The child on the right is wearing a white t-shirt and has paint on their face and hands. They are surrounded by paint containers and a messy table covered in paint. The image is overlaid with a diagonal split: the top-left portion is white, and the bottom-right portion is a solid blue color.

TRENDS IN ECE ACROSS CANADA

FEBRUARY 26, 2015

Best Start Resource Centre Conference 2015

Zeenat Janmohamed

Atkinson Centre for Society and Child Development,
OISE, University of Toronto

ECER 2014

REVERSING THE REAL BRAIN DRAIN

Early Years Study

Final Report

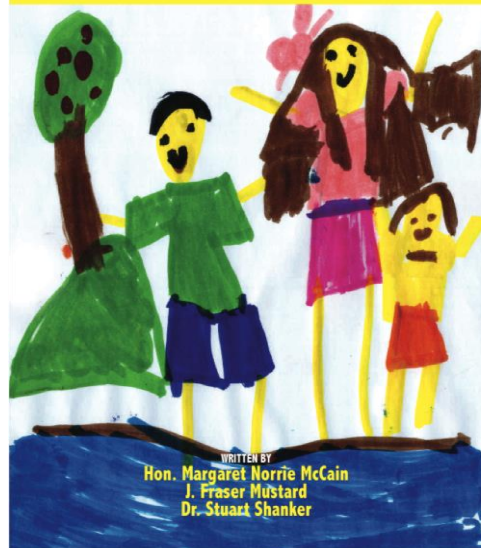


April 1999

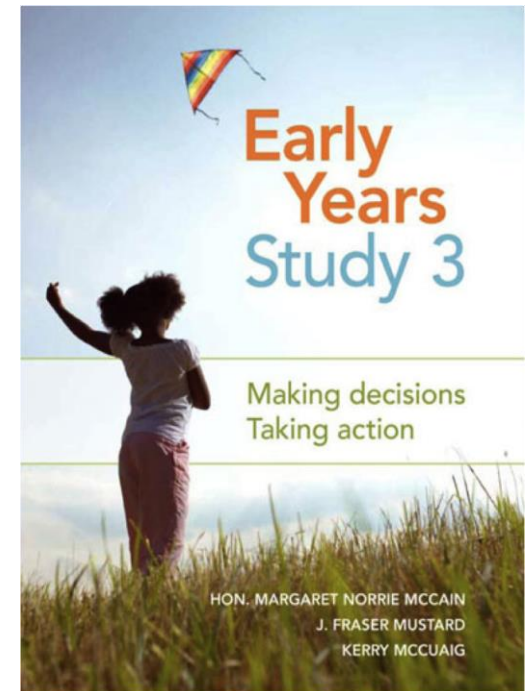
Co-edited by Hon. Margaret Norrie McCain & J. Fraser Mustard

EARLY YEARS STUDY 2

Putting Science into Action



WRITTEN BY
Hon. Margaret Norrie McCain
J. Fraser Mustard
Dr. Stuart Shanker



Early Years Study 3

Making decisions
Taking action

HON. MARGARET NORRIE MCCAIN
J. FRASER MUSTARD
KERRY MCCUAIG

ECER 2014

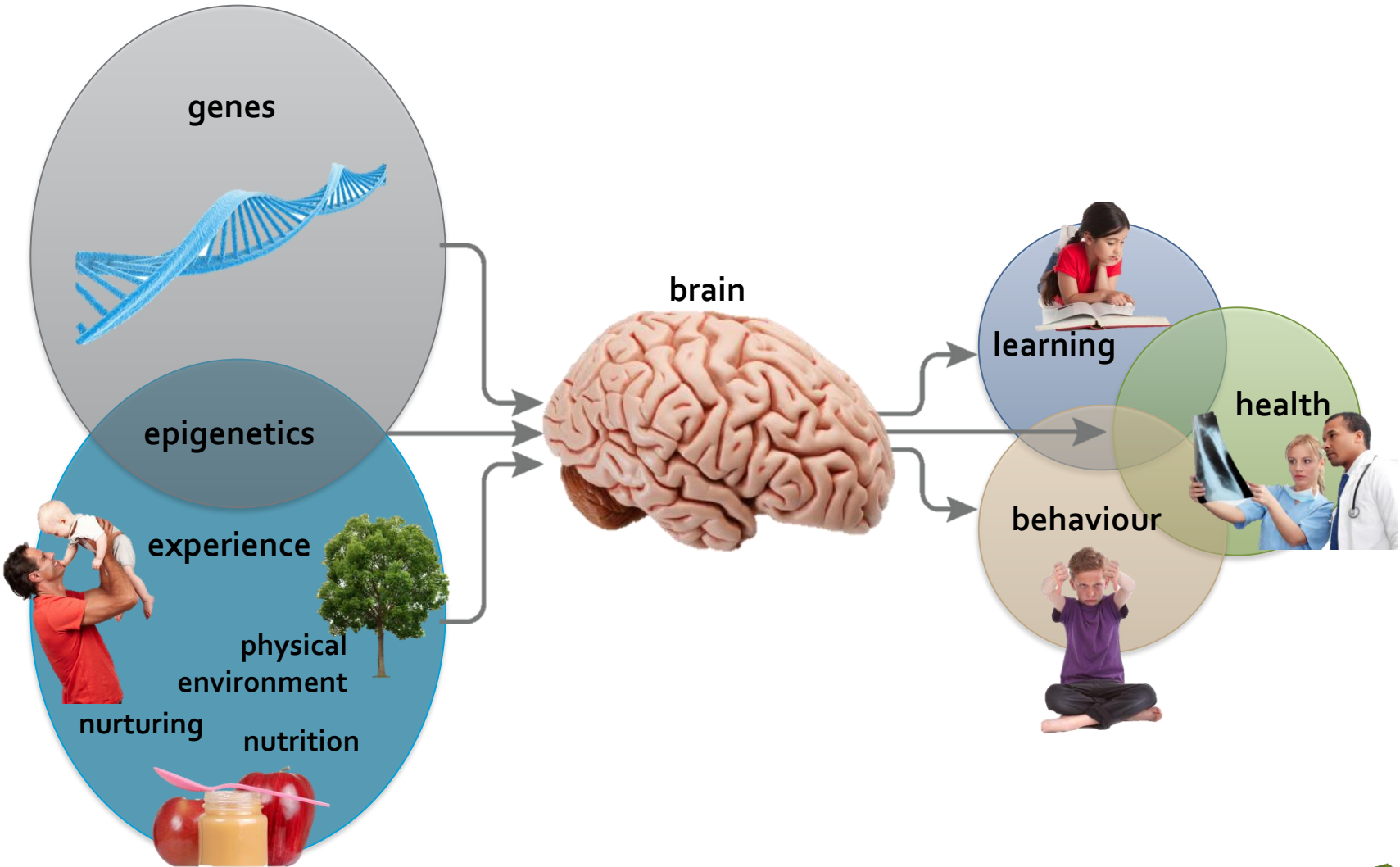
Atkinson Centre
for Society and Child Development

The scientific, social and economic rationale for ECE

ECER 2014

Atkinson Centre
for Society and Child Development

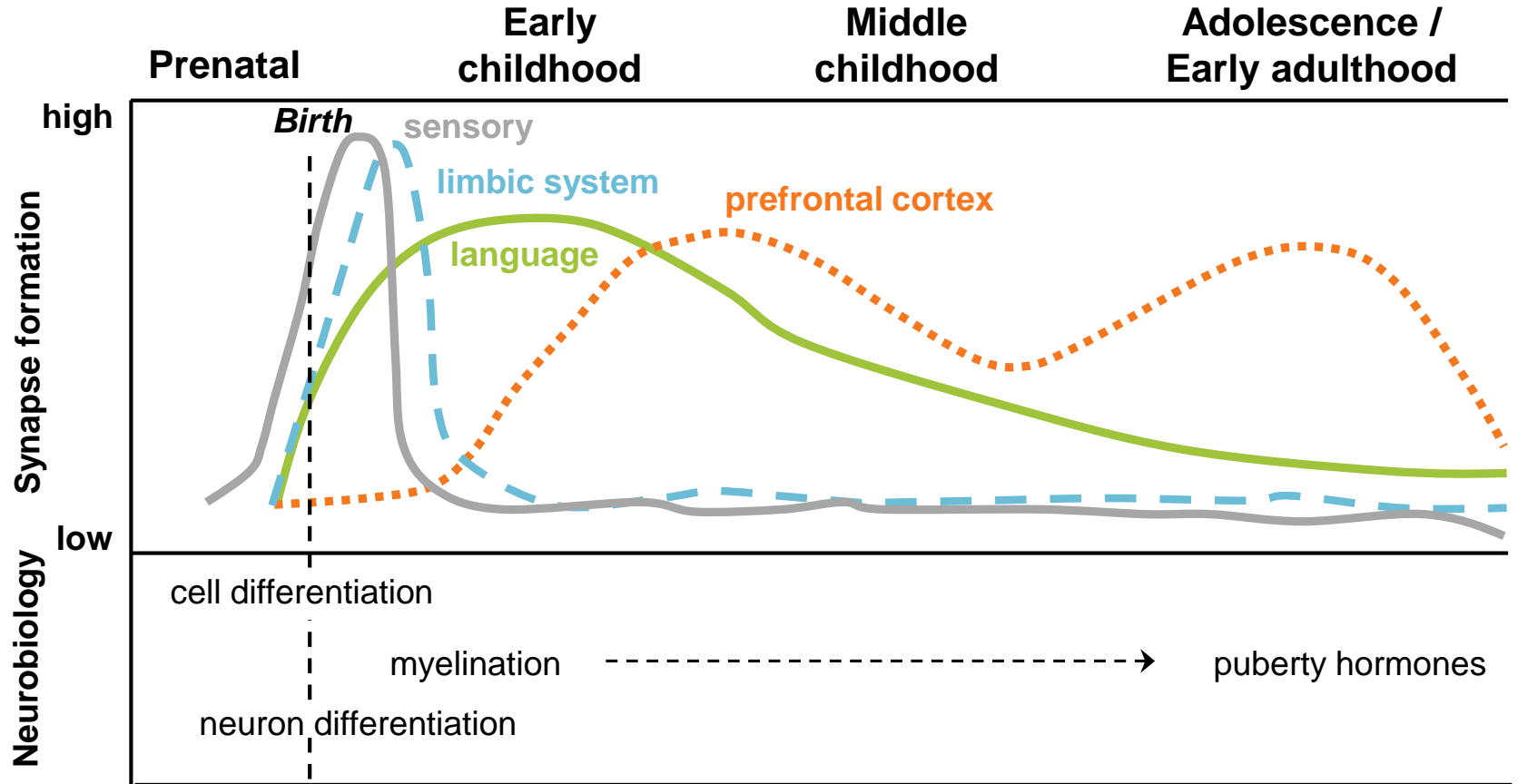
Experienced-based brain development



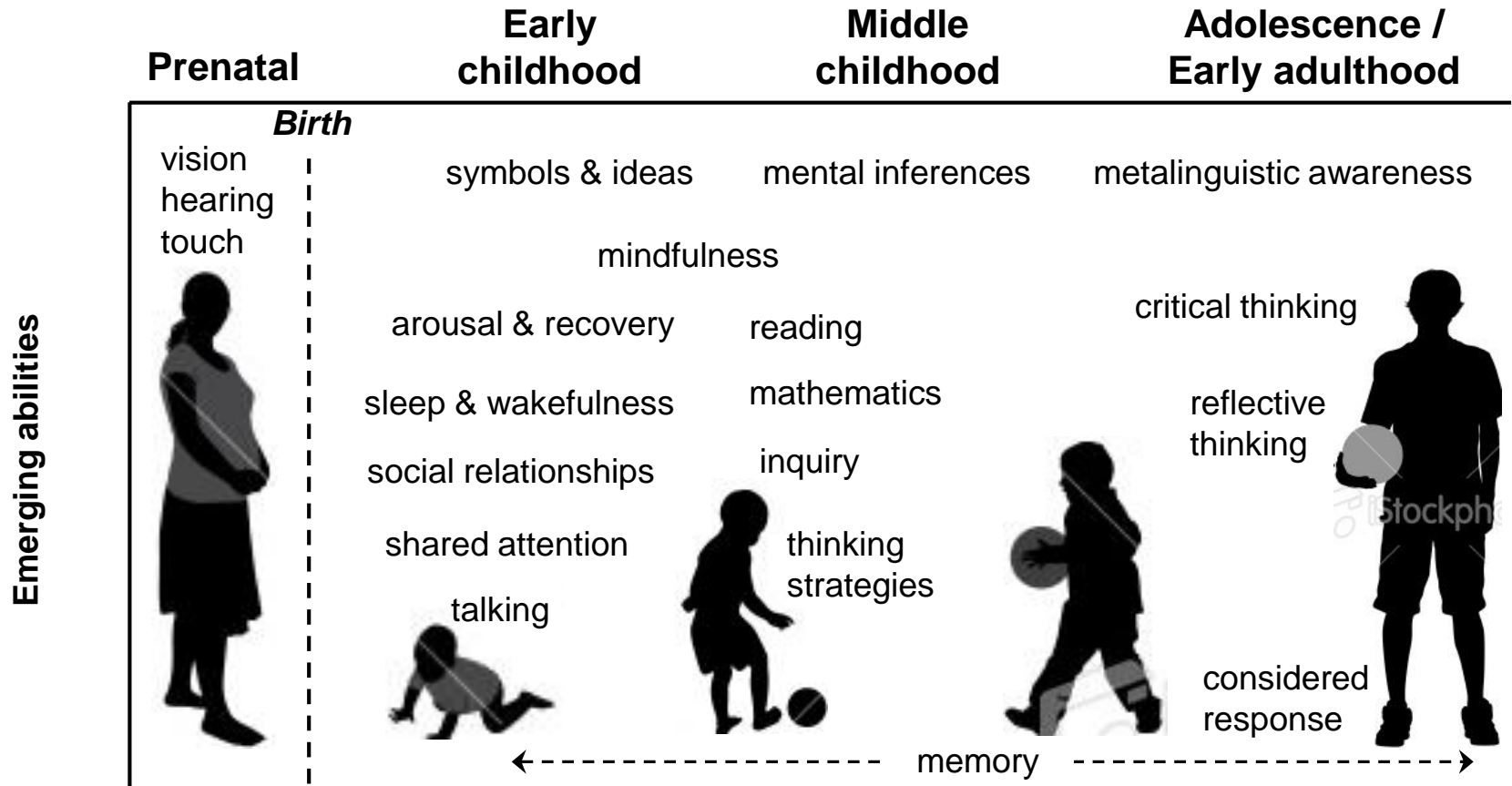
Adapted from: Fields, D. (2011); Kandel, E., Schwartz, J. & Jessell, T. (2000); McCain, M., Mustard, J.F. & Shanker, S. (2007).



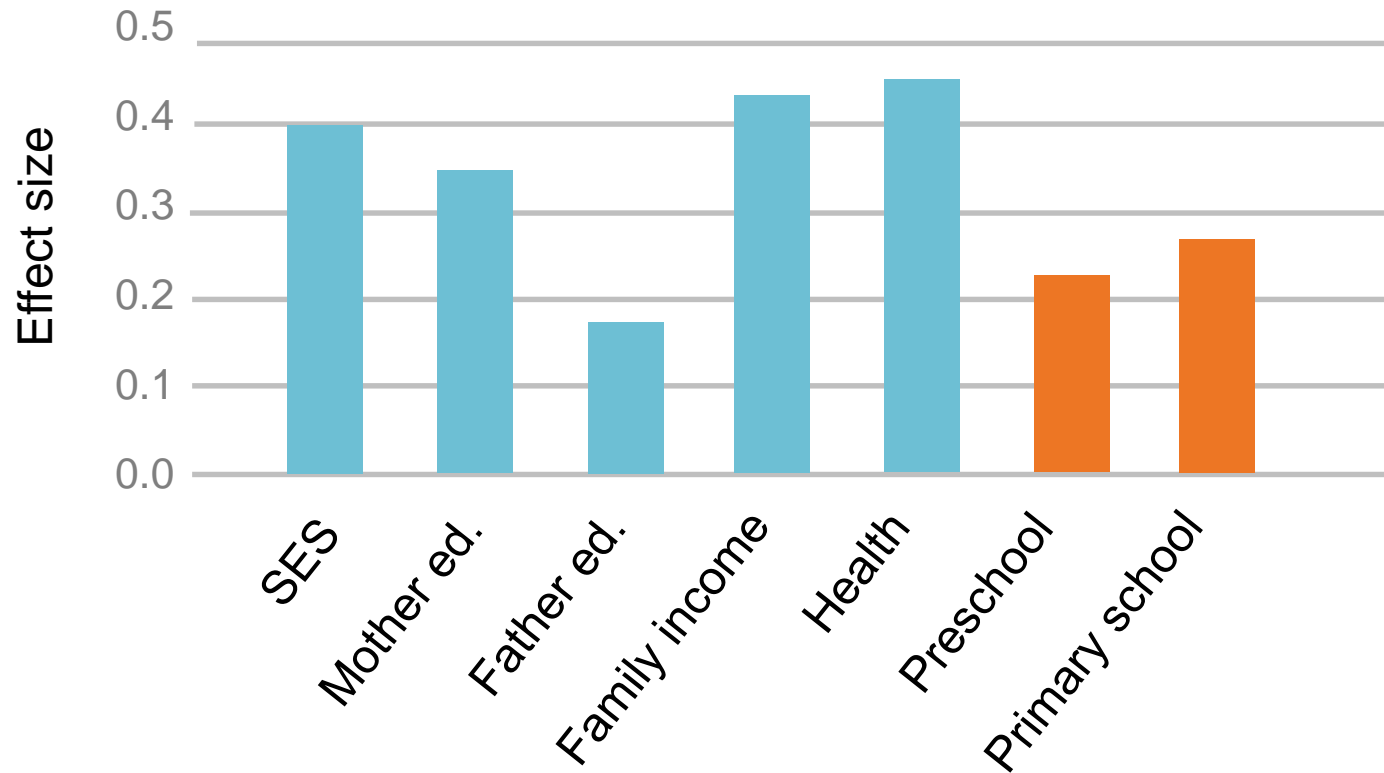
NEURAL PATHWAYS UNDER CONSTRUCTION



NEURAL PATHWAYS UNDER CONSTRUCTION



FACTORS AFFECTING ACHIEVEMENT AGE 11



Source: Melhuish, E. in Roseveare, D. (2011).

DONE RIGHT EARLY EDUCATION PAYS FOR ITSELF

	Year	Premise	Benefits	Ratio
<p>Economic Consequences of Quebec's Educational Childcare Policy</p> <p>Pierre Fortin Luc Godbout Suzie St-Cerny</p>	2011	<p>Increased women's employment by 70,000</p> <p>Enhanced maternal employment pays for the program</p>	<p>Quebec gains \$1.5 B in increased tax revenue</p> <p>Pays \$340 M less in tax and social benefits to families</p> <p>Increased GDP by \$5.2 B</p>	<p>For every \$1 spent on ECEC, Quebec receives \$1.05</p> <p>Federal government receives \$.44</p>
<p>Better Beginnings Better Future</p> <p>Queen's University</p>	2010	<p>\$580,000 per community site for 5 years</p> <p>3 sites involving children 4-8 years 5 sites involving children birth to 4 years</p> <p>Matched similar neighbourhoods</p>	<p>No difference for BBBF sites focused on birth to 4 years but reduced use of health, special education, child welfare in 4-8 years sites compared to matched neighbourhoods</p>	<p>For every \$1 spent in school-based programs, \$2 saved in reduced costs to public and community agencies</p>

WHAT HAS LOW COST EARLY EDUCATION AND CARE DONE FOR QUÉBEC?

70,000 more mothers are working

They generate \$1.5-billion annually in taxes

And draw \$340-million less in social transfers

Boosting the GDP by \$5-billion

Source: Fortin, P., Godbout, L., & St-Cerny. (2012).

QUÉBEC MOTHERS HAVE:

Moved Québec from the bottom to the top in female labour force participation in Canada

Halved child poverty rates

Halved social assistance rates for lone parents

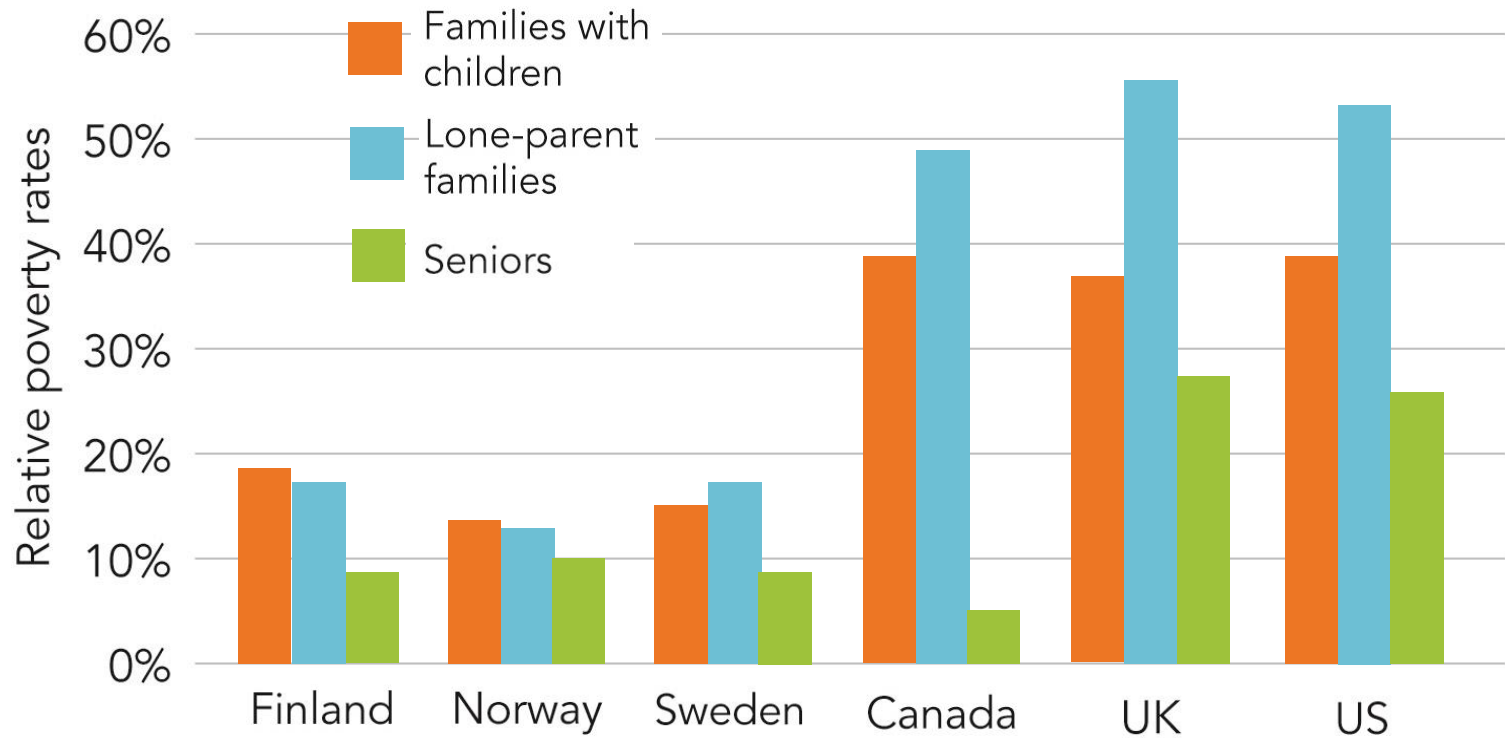
Boosted fertility

Meanwhile, Québec student test scores have moved from below to above the national average

DONE RIGHT EARLY EDUCATION PAYS FOR ITSELF

For every dollar Québec spends on ECE, it collects \$1.05 in increased taxes and reduced family payments, while the federal government gets \$0.55

Relative poverty rates for three social risk categories



Source: Commission on Social Determinants of Health. (2008). p. 85.


Early Childhood Education Report 2014: It's time for preschool

ECER 2014

Atkinson Centre
for Society and Child Development



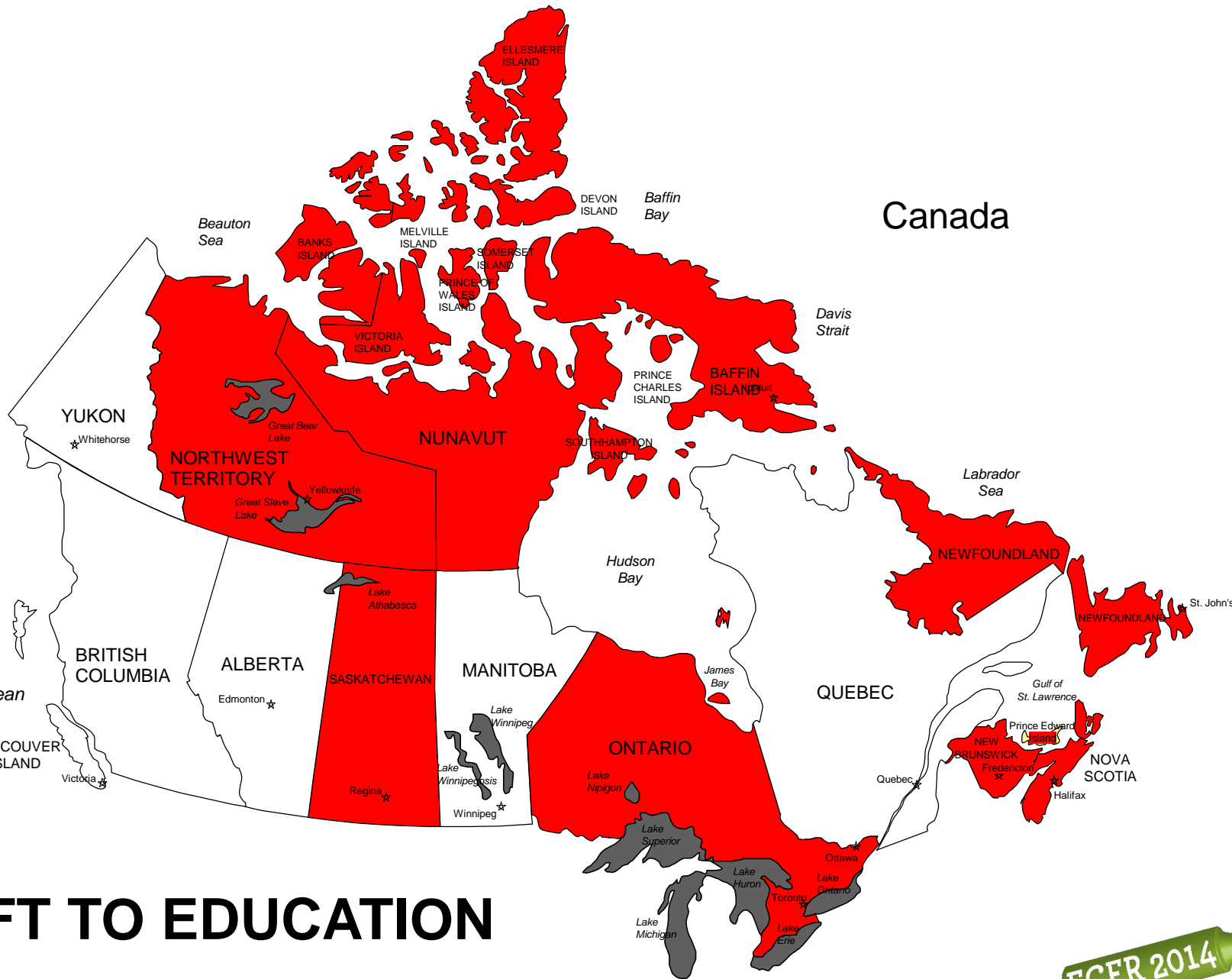
Early Childhood Education Report 2014



Getting it right
from the start



ECER 2014



Canada

SHIFT TO EDUCATION





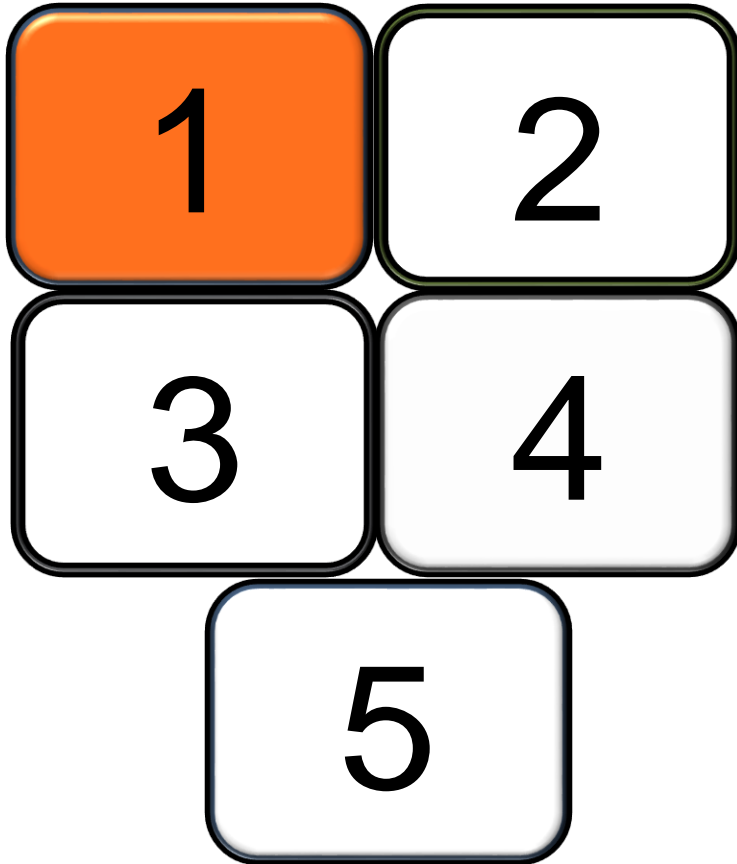
FULL DAY KINDERGARTEN





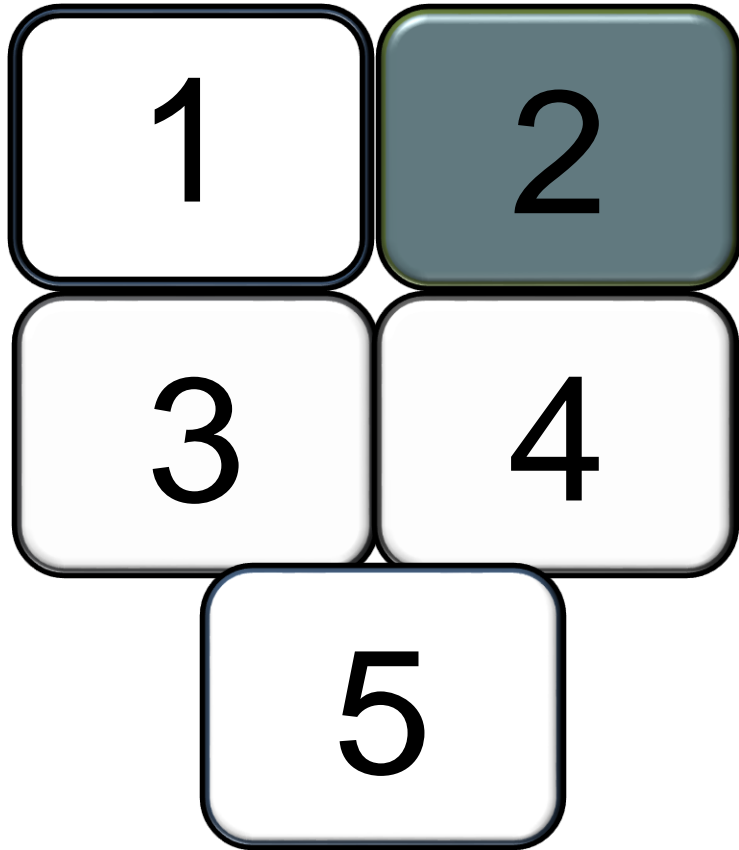
EARLY LEARNING CURRICULUM FRAMEWORKS





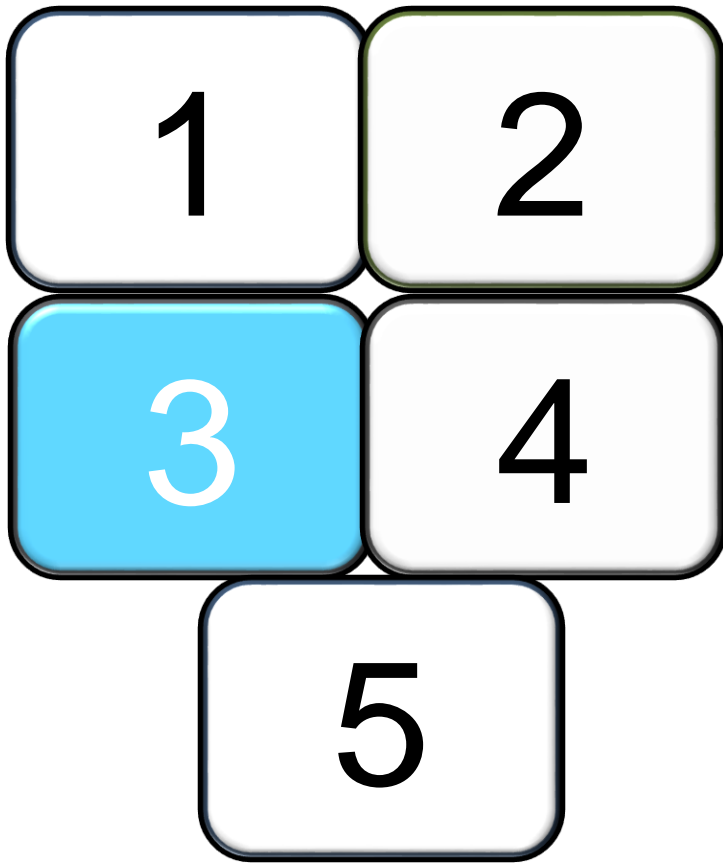
Wages improving
Increased post-secondary qualifications
Distinction between ECEs and assistants
Increased unionization

The ECE workforce



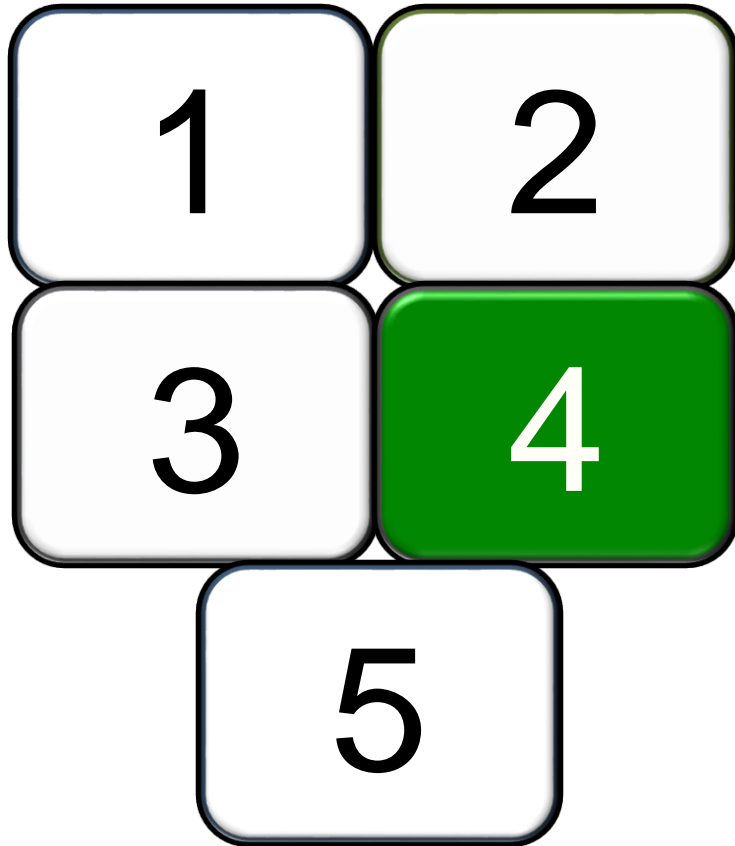
With exception of Nunavut, there is at least one quality measurement tool in use in every P/T

Accountability through program monitoring



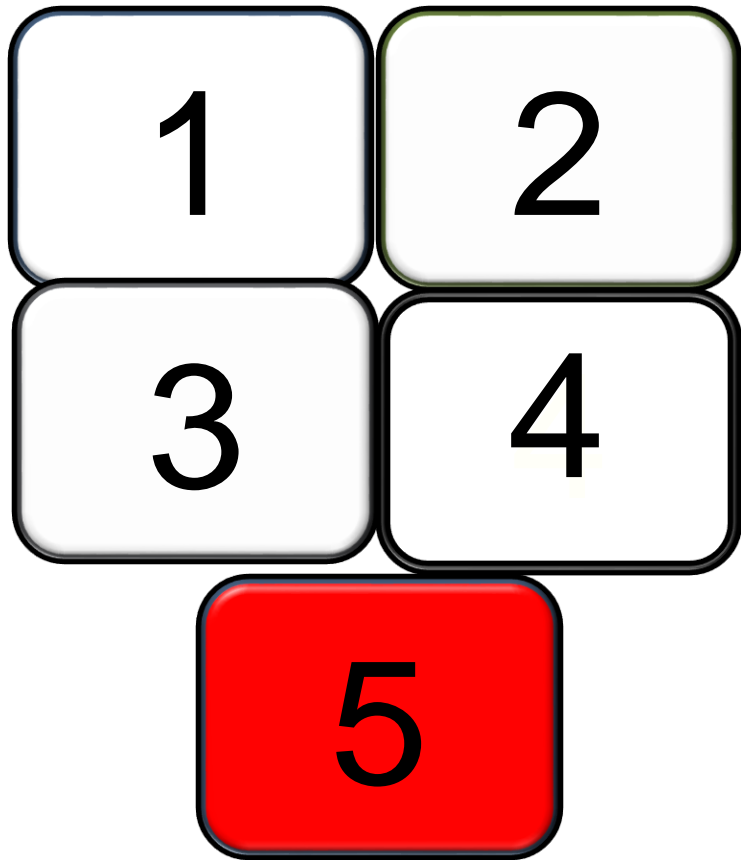
Eight P/Ts require ECES to be certified or registered.

Increased definition of ECE
scope of practice



Increased undergraduate
and graduate post-
secondary opportunities in
ECE

ECE policy and practice
research in Canada

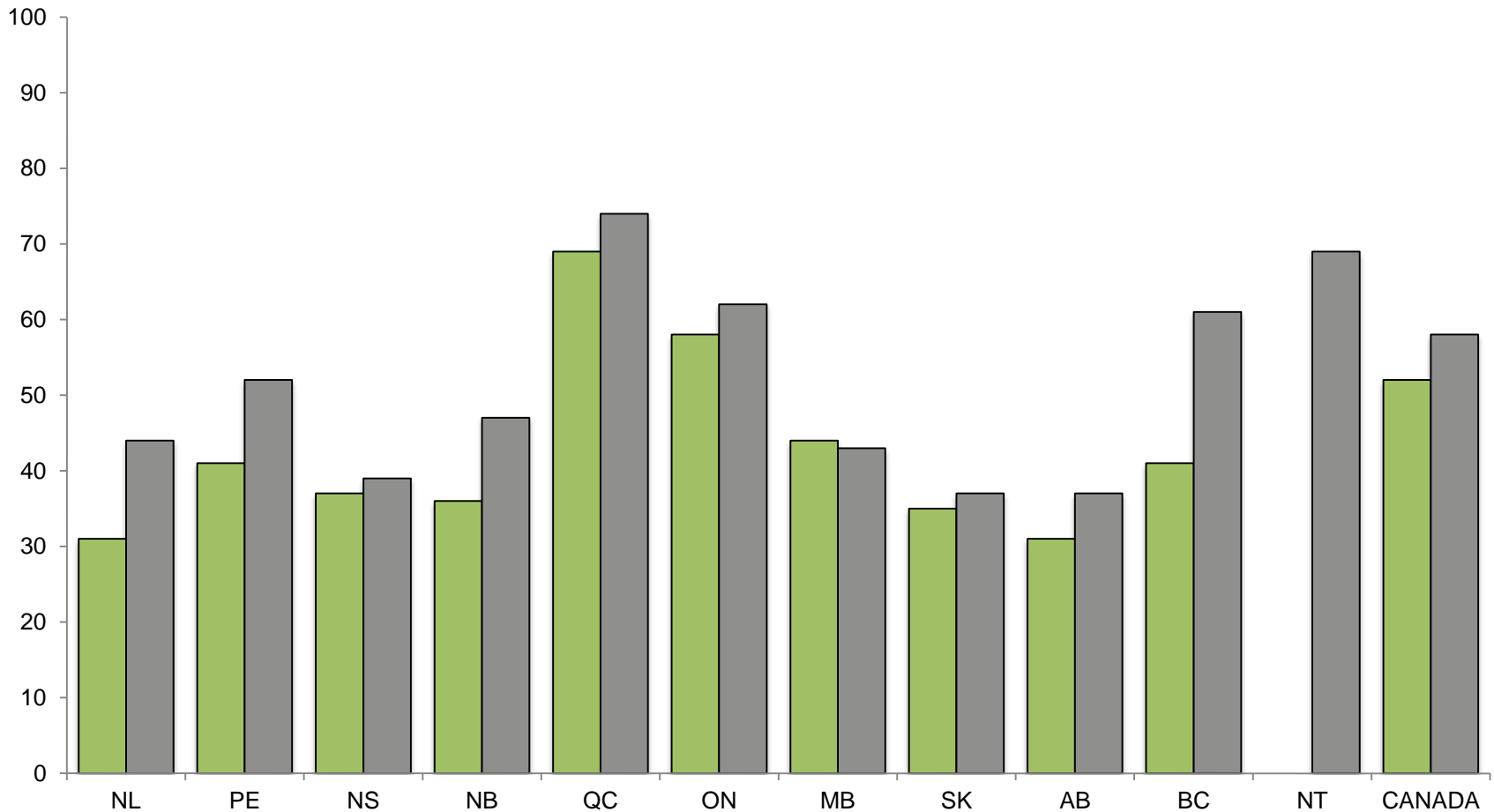


ECEs challenged to make significant changes

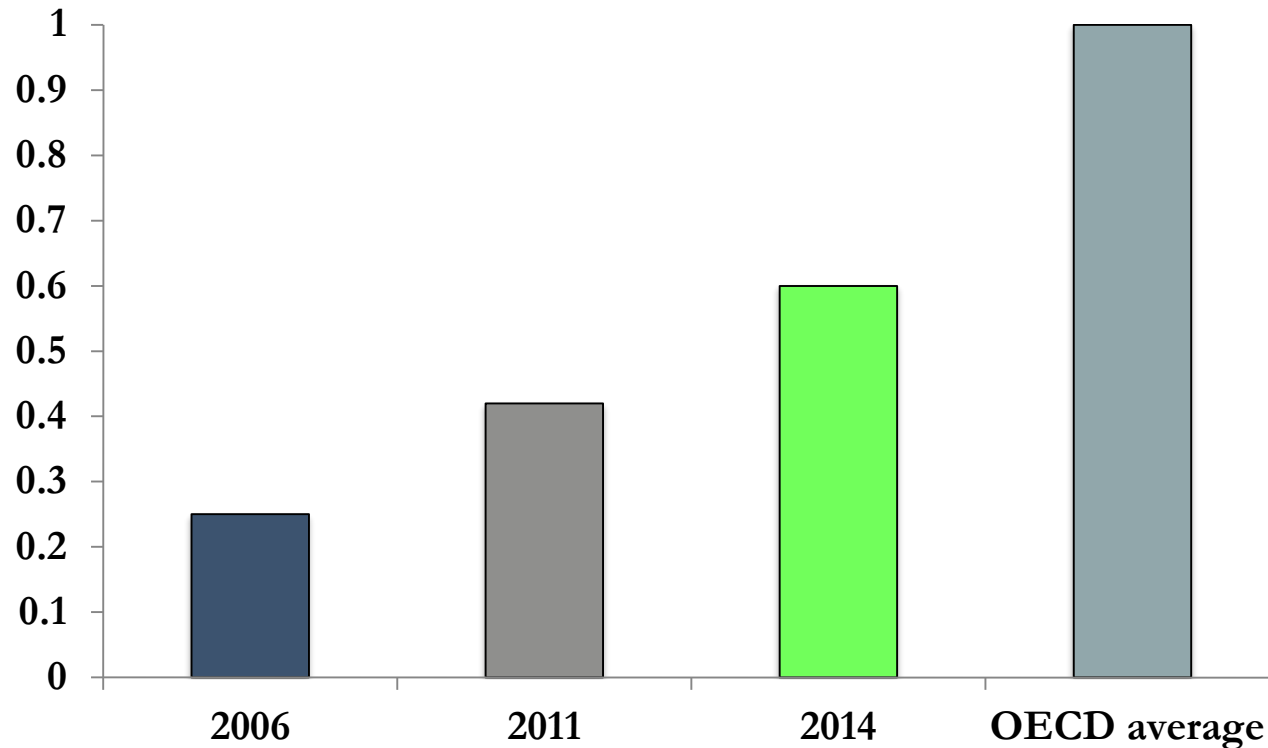
College ECE programs challenged to shift curriculum content to prepare ECEs for a changing landscape

Moving from cottage industry to a system

PERCENT CHANGE IN ECE ATTENDANCE BY CHILDREN 2 TO 4 YEARS OLD

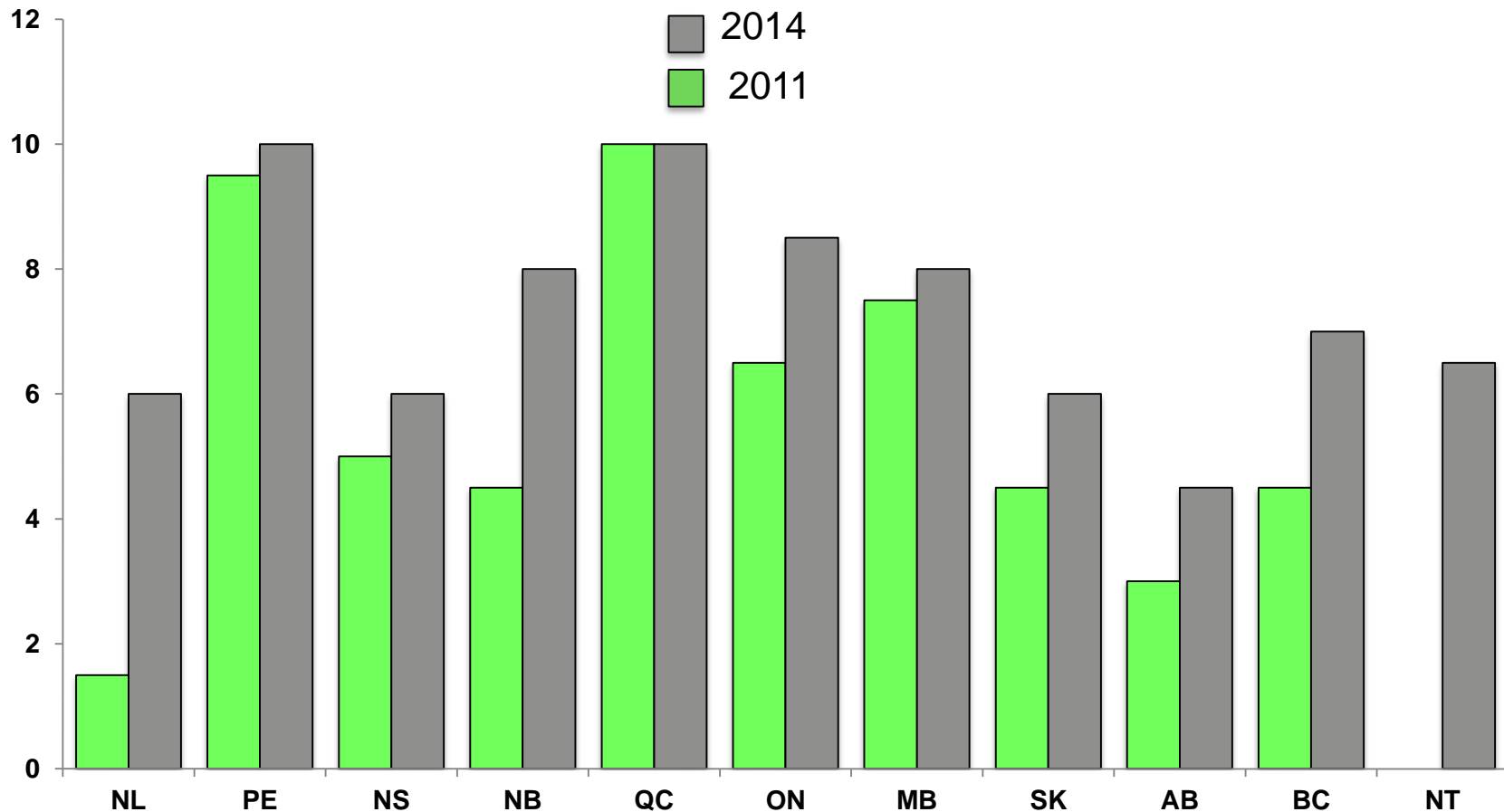


CHANGE IN CANADA ECE SPENDING AS A PERCENTAGE OF THE GDP



MORE ATTENTION TO EARLY CHILDHOOD EDUCATION

Change in ECE Report Results



Joining up family resources, & maternal, newborn and child health with early childhood education?

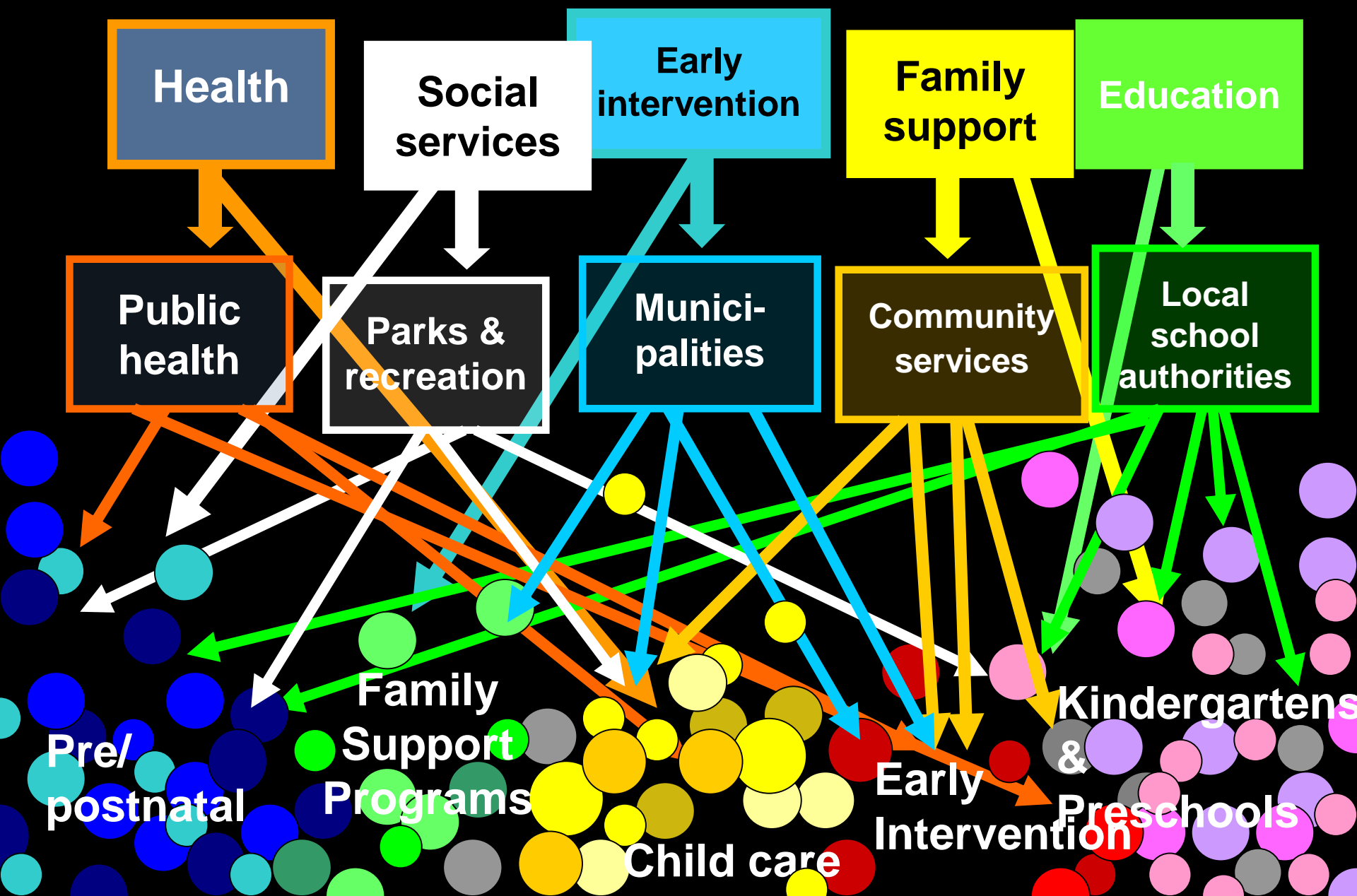
ECER 2014

Atkinson Centre
for Society and Child Development

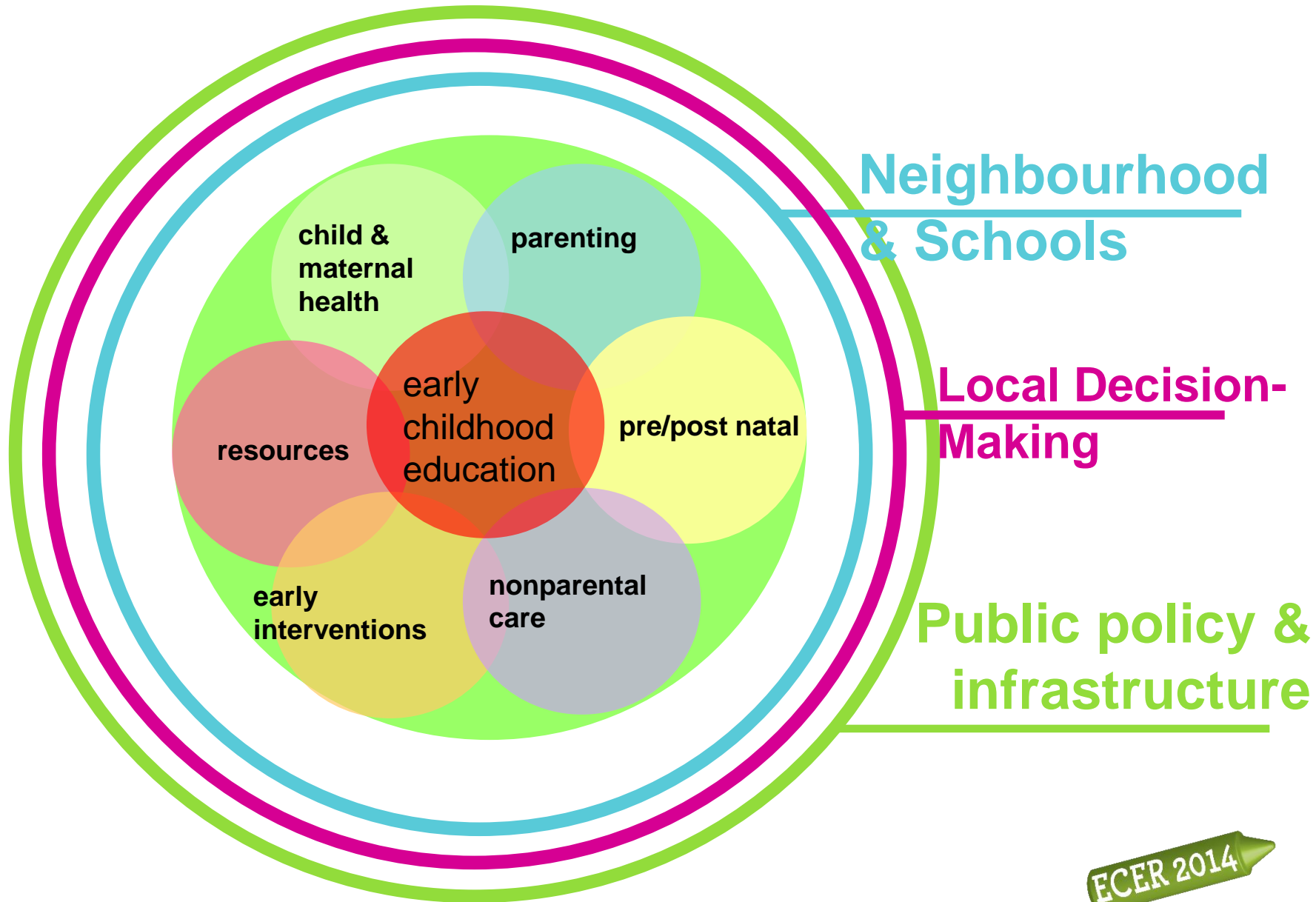
THE EARLY EDUCATION CHALLENGE

Research indicates integrated delivery of early childhood and family support programs from a stable platform serves more families, more cost-effectively and in ways that families want to be served.

Chaos



INTEGRATED CHILD & FAMILY CENTRE



**Neighbourhood
& Schools**

**Local Decision-
Making**

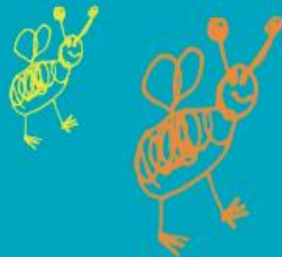
**Public policy &
infrastructure**

With **Our Best Future** in Mind
Implementing Early Learning in Ontario



Plan for Child & Family Centres

In spring we play baseball. In spring we see blue flowers.
In spring we fly a kite. In spring we do spring dance.
In spring we have fun. In spring we have flowers.
In spring we play soccer. In spring we see blue flowers.
In spring we fly a kite. In spring we have flowers.



Report to the Premier by the
Special Advisor on Early Learning
Charles E. Pascal

A PAN-CANADIAN MONITORING OF FAMILY RESOURCE/EARLY INTERVENTION/FAMILY HEALTH?

A sister monitoring tool to the ECE Report

Benchmarks based in evidence

Data publicly available across Canada

A credible, non-government host

ECER 2014

Atkinson Centre
for Society and Child Development

REFERENCES

Akbari, E. & McCuaig, K., (2014) Early Childhood Education Report 2014. Atkinson Centre, University of Toronto

McCain, M., Mustard, F. & McCuaig, K. (2011) Early Years Study 3. Toronto, ON: Margaret & Wallace McCain Family Foundation
www.earlyyearsstudy.ca

Atkinson Centre [online] Policy Monitor: Early Child Program and Policy Update. www.oise.utoronto.ca/atkinson/Resources/Policy_Monitor/index.html



Margaret & Wallace McCain
Family Foundation

ATKINSON
FOUNDATION

ADDITIONAL RESOURCES

Early Childhood Education Report 2014:
www.timeforpreschool.ca

Atkinson Centre:
www.oise.utoronto.ca/atkinson

Contact:
zeenat.janmohamed@utoronto.ca



Atkinson Centre
for Society and Child Development

ECER 2014