

Addressing Health Inequities Through Early Childhood Education

Public Health Early Years Group
The Early Years: Multi-sectoral Action

Jane Bertrand
Atkinson Centre, OISE

Margaret and Wallace McCain Family Foundation

November 11, 2016

1st Early Childhood Education Action Congress



Hosted by  **OECD PARIS**
BETTER POLICIES FOR BETTER LIVES

FRANCE

JUNE 6TH TO 7TH 2016

Visit www.eduensemble.org

Building support among key leaders in diverse countries to expand quality early education for all children

Organized by:

In cooperation with:



Encyclopedia
on Early Childhood
Development

ReadyNation 

SECD
SCIENCE OF EARLY
CHILD DEVELOPMENT

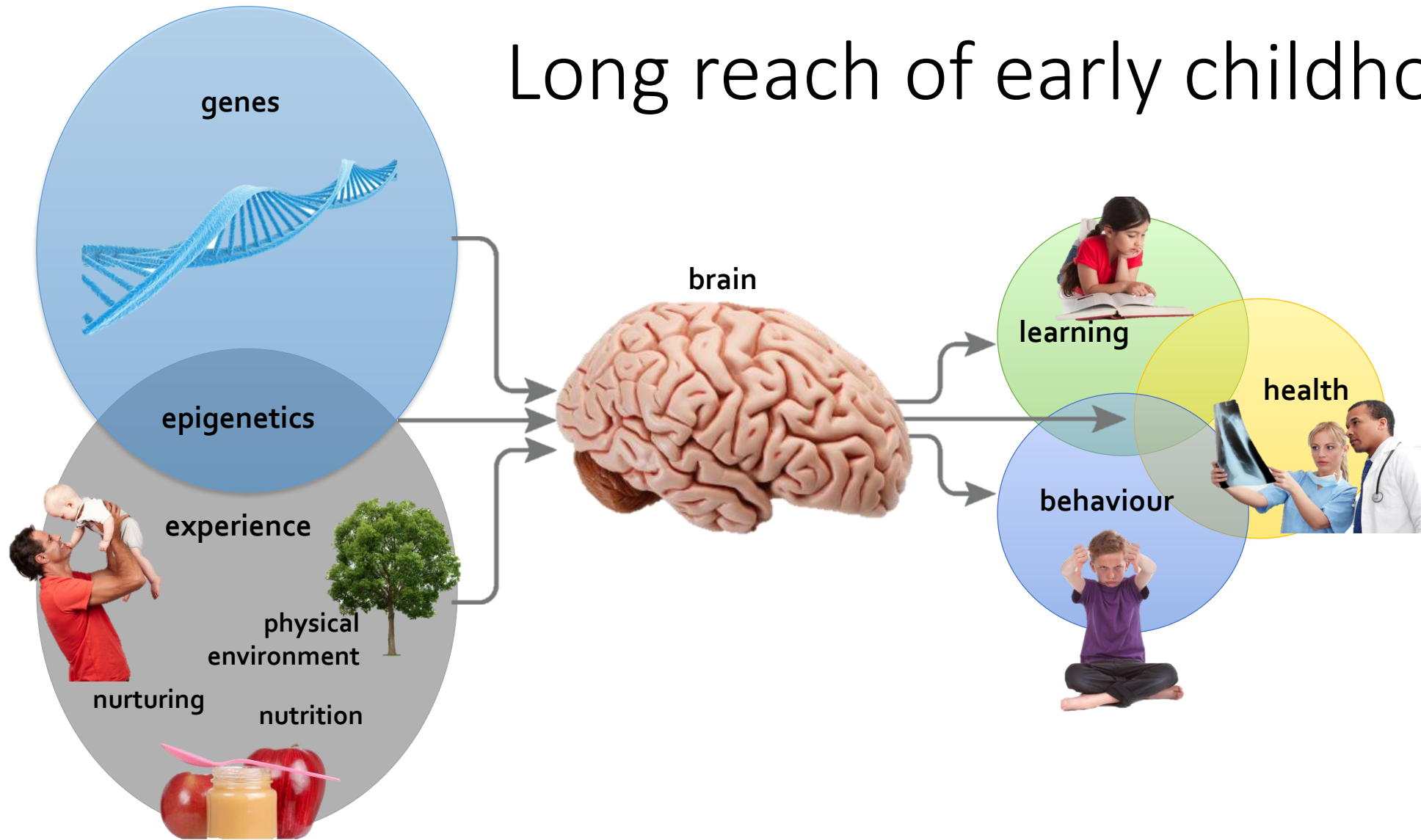


Margaret & Wallace McCain
Family Foundation

THE
LAWSON
FOUNDATION

<http://eduensemble.org/?lang=en>

Long reach of early childhood



Adapted from: Fields, D. (2011); Kandel, E., Schwartz, J. & Jessell, T. (2000); McCain, M., Mustard, J.F. & Shanker, S. (2007).

\$\$\$\$\$\$\$\$



Labour participation,
skills, productivity,
tax revenue

ECE =



Special education,
social assistance,
health care, child
welfare, crime

**Every child,
every opportunity**



Design Principles



BENEFITS OF EARLY CHILDHOOD EDUCATION

CHILD



A strong start for school and for life

FAMILY



Economic stability and work/life balance

SOCIETY



Equity, prosperity, inclusion

Every \$1 invested in early education returns \$2 in reduced social costs and increased tax revenue from working parents.

% of GDP devoted to ECE:



*The Organization for Economic Cooperation and Development is composed of 34 of the world's richest countries.

Canadian governments need to invest an additional \$8-billion to meet the OECD average.

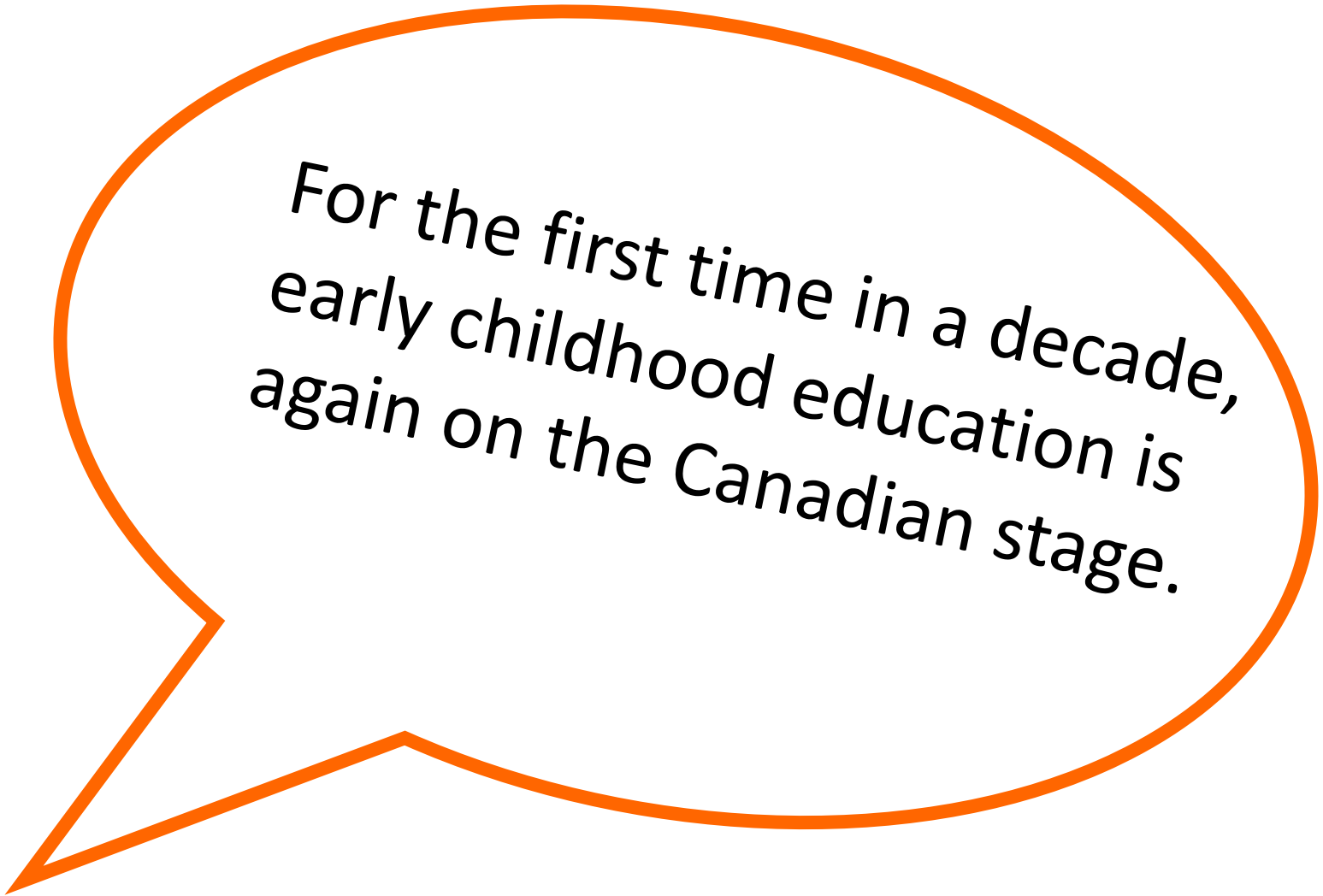
Canada needs to catch up

The economics of preschool are a great reason to invest: for children, for families, for Canada.

IT'S TIME FOR PRESCHOOL

timeforpreschool.ca

Mobilizing support for public investment



For the first time in a decade,
early childhood education is
again on the Canadian stage.

Atkinson Centre



UNIVERSITY OF TORONTO
OISE | ONTARIO INSTITUTE
FOR STUDIES IN EDUCATION

<http://www.oise.utoronto.ca/atkinson>



Margaret & Wallace McCain
Family Foundation

<http://mwmccain.ca/>

Jane Bertrand janebertrand@rogers.com