



UNIVERSITY OF TORONTO
OISE | ONTARIO INSTITUTE
FOR STUDIES IN EDUCATION

VIEWBOOK 2025 / 2026

WITH OISE I CAN
**MAKE A
DIFFERENCE.**

GRADUATE STUDIES IN EDUCATION
TEACHER EDUCATION

JACQUI GETFIELD

PhD 2022 / SJE
Social Justice Education

[UOFT.ME/JACQUI](https://uoft.me/jacqui)



For a quick recap of all links found in this viewbook, visit: [INSTABIO.CC/31012154RGREA](https://instabio.cc/31012154RGREA)



TABLE OF CONTENTS

PRIORITIZING INDIGENOUS VALUES & PERSPECTIVES	4
CENTRING BLACK VOICES & EXPERIENCES	5
IGNITE YOUR POTENTIAL	6
FOUR PATHS, ONE JOURNEY	8
TWELVE DEGREE PROGRAMS, COUNTLESS CHOICES	10
FLEXIBLE OPTIONS	13
TEACHER EDUCATION PROGRAMS	14
PROGRAMS OF STUDY	16
OPPORTUNITIES OUTSIDE THE CLASSROOM	18
SUPPORTING YOUR STUDIES	20
FUND YOUR JOURNEY	21
YOU BELONG HERE	22
THE NEXT STEP IS YOURS	23



WELCOME AND WARM WISHES FROM OUR DEAN

I know all too well the anticipation and excitement that comes with a new educational opportunity. As a former high school mathematics teacher and professor of mathematics education from the United States, I can attest that OISE is a great place to pursue new ideas and advance your professional aspirations.



Thinking back to my first peek inside one of the pre-eminent graduate faculties of education in the world, I suspect that some of the things that attracted me to OISE as dean are also top of mind for you as a prospective student.

First, OISE is a place to make a difference. We've been advancing education, human development, and professional practice around the world for more than 100 years and are committed to continuing to explore new possibilities for teaching and learning.

Second, OISE is home to some of the top educators in the world. Our more than 100 full-time continuing faculty members, along with many more affiliated educators, are also brilliant researchers who embed their discoveries in the classroom.

As you read more about our programs on the pages that follow, you'll discover that OISE is highly student-centred. You can choose from 12 unique degree programs with various specializations, full or part-time study options with an unmatched range of professional learning opportunities.

Last but not least, OISE is your key to the world. The diversity of our community is one of our greatest strengths. And it doesn't end with graduation. Your time at OISE will open the door to a worldwide network of more than 100,000 alumni.

Within days of joining OISE in January 2023, I knew that my choice was the right one. I'm proud and privileged to be leading such a dynamic institution surrounded by people who share my passion for education, research, and practice.

I very much look forward to welcoming you to the OISE community in 2025!

Warmly,

ERICA N. WALKER

Professor and Dean
Ontario Institute for Studies in Education
University of Toronto

INDIGENOUS VALUES & PERSPECTIVES



JACQUE/LINE LAVALLEE

PhD 2022/ SJE
OISE Elder-in-Residence

Dr. Lavallee has been a trusted, respected leader within our Institute, as our principled Elder-In-Residence and now as a Doctor of Education. In her doctoral research, Dr. Lavallee designed and delivered a series of medicine teachings, created a series of high-quality pedagogical audio recordings, and wrote a report on her findings of her inquiry into what it means to offer those teachings in a university setting.

Read more about Jacqueline's story at:
[UOFT.ME/LAVALLEE](https://uoft.me/lavallee)



INDIGENOUS EDUCATION NETWORK (IEN)

The Indigenous Education Network (IEN) is a group of students, faculty and community members who share a common commitment to and passion for elevating radical ways of knowing, organizing action and change, and deepening relations between Indigenous, Black, and Black-Indigenous peoples.

For over 30 years, the IEN has been crafting meaningful opportunities for mutual aid, collaboration, and deepening relations between members of the OISE community.

Read more about OISE's commitment to Indigenous people:
[UOFT.ME/INDIGENUSED](https://uoft.me/indigenoused)

Read more about U of T's commitment to Indigenous people:
[INDIGENOUS.UTORONTO.CA/ABOUT](https://indigenous.utoronto.ca/about)

FACTS

7

Indigenous faculty members

24+

Indigenous-centred courses

We wish to acknowledge this land on which the University of Toronto operates. For thousands of years it has been the traditional land of the Huron-Wendat, the Seneca, and the Mississaugas of the Credit. Today, this place is still the home to many Indigenous people from across Turtle Island and we are grateful to have the opportunity to teach, learn and work on this land.

Be a part of an exciting environment that prioritizes Indigenous values and educational research, dynamic discussion, and transformative action. Get support through academic advising, traditional teaching, and access to spaces, events, and other opportunities for Indigenous students.

CENTRING BLACK VOICES & EXPERIENCES



LANCE MCCREEDY

Associate Professor in the Department of Leadership, Higher and Adult Learning

Read more about Lance at:
[UOFT.ME/LANCE](https://uoft.me/lance)

The Centre for Black Studies in Education (CBSE) officially opened its space on June 9, 2023. The CBSE exists primarily to harness the knowledge of Black scholars and address anti-Blackness and inequities that impact Black people in all aspects of Canadian life, including education. In addition, the Centre for Black Studies in Education is designed to:

- Foster, strengthen, and value Black studies research and pedagogical practices in education.
- Increase and advance Black scholarship in research, pedagogy, and curriculum development.
- Serve as a safe, accessible, and inclusive space for OISE's Black professors and students, and for critical dialogue around issues of race, racism, African Indigeneity, decolonization, and more.
- Facilitate collaboration with research programs, faculty members in other departments, and community organizations to promote critical Black studies research and pedagogy.
- Provide leadership and training on anti-Black racism and equity training to influence equity matters.

The Centre embraces a robust framework of education, teaching and learning in formal educational settings and non-formal settings, work/labour organizations, and community-based settings.

It supports the theorization of practices grounded in African, Indigenous, Afro-Caribbean, and Black Indigenous worldviews and ways of knowing.

The CBSE is located in Room 225 on the second floor of the OISE Building. Some of the Centre's activities include scholarly paper development, training, and writing groups, seminars, guest lectures, and an annual conference.

A Journal of Black Studies in Education is also in development.

LEARN MORE ABOUT THE CBSE

Additional information related to the CBSE directors, Black Faculty Caucus members, events, and news: [OISE.UTORONTO.CA/CBSE/ABOUT](https://oise.utoronto.ca/cbse/about)

Read an interview session with the CBSE co-founders Professor Lopez & Professor Wane:
[UOFT.ME/CBSEINTERVIEW](https://uoft.me/cbseinterview)

IGNITE YOUR POTENTIAL

Named the top Canadian school of education, 4th in North America and 8th globally, OISE's diverse community of innovators, collaborators and leaders have been advancing education, human development, and professional practice worldwide for over 100 years.

Located in the heart of Toronto, we ignite possibilities by putting award-winning faculty, top researchers, and bright, passionate students together with world-class resources, a tradition of excellence, and a rich network of collaborators.

GLOBALLY RANKED

#1 School of education in Canada **

#4 School of education in North America **

#8 School of education in the world **

100,000+ Alumni *

** QS World University Rankings 2024

* Internal OISE data based on Fall 2022 enrolment

WORK WITH TOP MINDS

Challenge yourself and grow with internationally recognized faculty members who are excited to share their passions and nurture yours.

FIND YOUR PATH

Find the right program for you with options like full- or part-time, master's or doctoral, online learning, and collaborative specializations.

GO FARTHER, FASTER

Open doors with a globally recognized degree that prepares you to take on new challenges, reach new heights, and make a bigger impact.

EXPLORE & INNOVATE

Work with top researchers with \$8 million in annual funding, 18 research centres, and a rich network of local and global collaborators.

ADVANCE JUSTICE

Join a passionate community that's committed to social justice, celebrates diversity, and supports Indigenous education.

GET CONNECTED

Tap into a rich network of top students, faculty and alumni in government, industry, entrepreneurship, research, academia, and teaching.

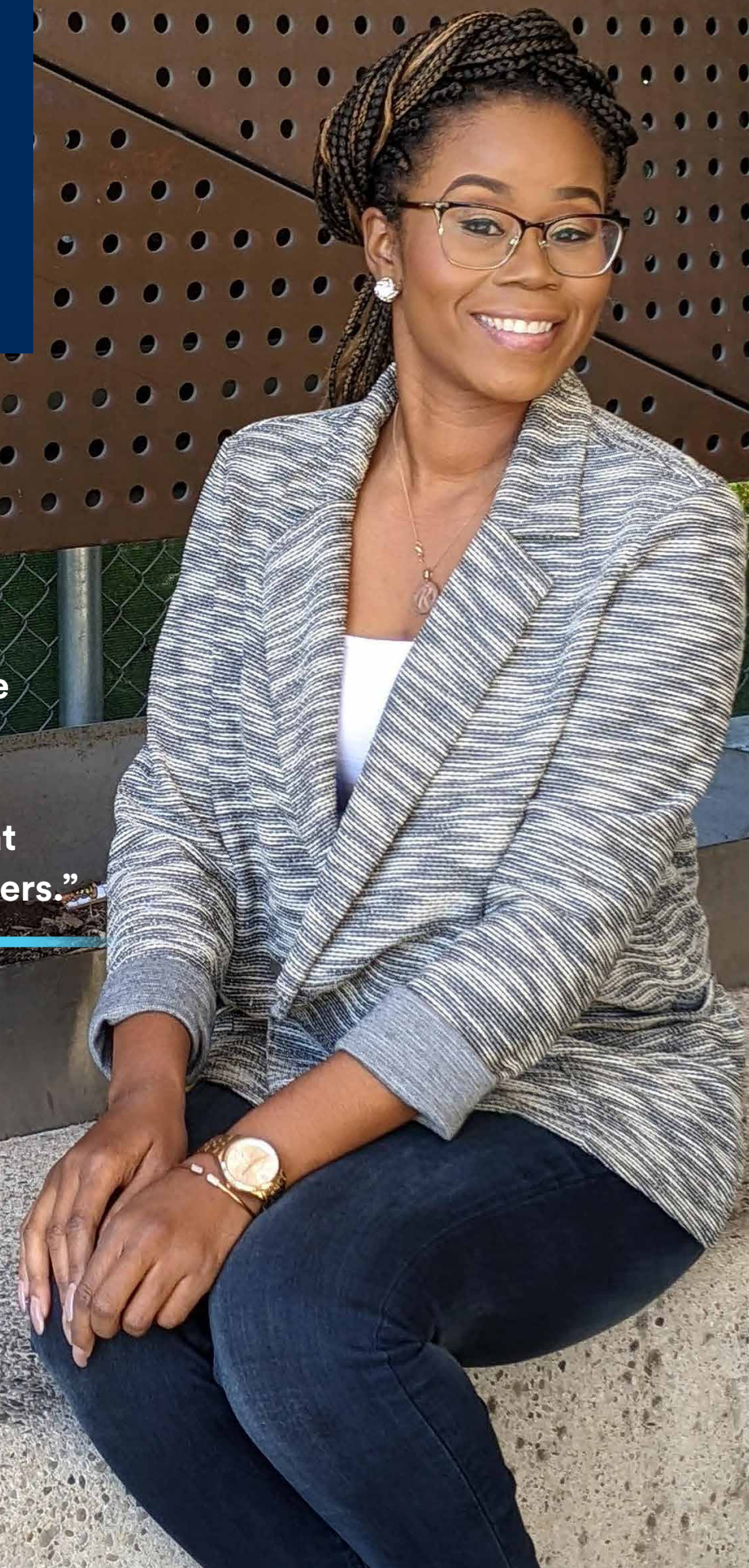
STEPHANIE DUFF

MEd 2019 / APHD

Stephanie is an elementary school teacher, the author of a children's book series, and a dedicated lifelong learner—always striving to enhance her skills to better support families.

Read about Stephanie's story at: [UOFT.ME/STEPHANIE](https://uoft.me/stephanie)

“My OISE experience instilled a lifelong love of learning and a desire to share that knowledge with others.”



FOUR PATHS, ONE JOURNEY

OISE is home to four distinct yet interrelated departments whose broad range of programs reflects how the study of education impacts all areas of society. Through our many programs, specializations, and research opportunities, students can customize their learning experience while discovering entirely new fields and passions.

APPLIED PSYCHOLOGY & HUMAN DEVELOPMENT (APHD)

The Department of Applied Psychology and Human Development offers five programs that focus on foundational and applied research in the areas of human development, clinical and counselling psychology, educational psychology, special education, and teaching.

LEADERSHIP, HIGHER & ADULT EDUCATION (LHAE)

The Department of Leadership, Higher & Adult Education is a dynamic and inclusive learning community focused on educational administration, leadership, policy, community engagement, and change. Its three graduate programs explore local and global connections between various social and professional environments.

CURRICULUM, TEACHING & LEARNING (CTL)

The Department of Curriculum, Teaching and Learning is the largest of four departments at OISE. With a diverse community of tenured and tenure-stream faculty as well as lecturers, the department offers a wide range of graduate courses and programs relating to academic scholarship and professional practice. Faculty and students research, write, and teach about a wide variety of subjects concerning children, youth, and teachers, both in and out of schools.

SOCIAL JUSTICE EDUCATION (SJE)

The programs offered by the Department of Social Justice Education are based on the diverse intellectual traditions of the humanities and social sciences. The department is committed to multi and interdisciplinary studies in education and focusing on equity and social justice, from various perspectives, including history, philosophy, sociology, and political science.



“When I learned that the Global Mental Health program included a global practicum placement, I saw it as the ideal opportunity to better understand the mental health climate in my home country of Uganda. The plan was to return to Uganda after graduation and work in the mental health field, and the placement helped me get a taste of what that would look like.”

BERTHA KIZITO

MEd 2022 / APHD
Counselling Psychology, Field: Global Mental Health & Counselling Psychology

Read about Bertha's story at:
[UOFT.ME/BERTHA](https://uoft.me/bertha)

“Before joining OISE, I found it challenging to secure a leadership position. Enrolling at OISE became the pivotal moment in my journey, propelling me into a successful leadership role.”

GHAYAS SHAMS

MEd 2019 / LHAE
Higher Education

Read about Ghayas' story at:
[UOFT.ME/GHAYAS](https://uoft.me/ghayas)



TWELVE DEGREE PROGRAMS, COUNTLESS CHOICES

A degree from OISE is globally respected. It is recognition that you're seeking change and impact, not just a title. Whether you're a teacher or an educational professional in the field, OISE degrees offer a unique platform for expanding your horizons towards an entirely new career and new life opportunities.

MASTER OF EDUCATION MEd

The MEd programs are ideal for the professional development of those already engaged in a career related to education. These programs offer flexible academic and professional learning opportunities.

MASTER OF ARTS MA

The MA programs are suitable for those who wish to pursue advanced study, research, and analysis. Students interested in a research career or doctoral studies typically undertake MA programs.

MASTER OF TEACHING MT

The MT program combines teacher qualification with advanced study of educational theory and the opportunity to conduct research.

DOCTOR OF EDUCATION EdD

The EdD programs are optimal for the professional development of practitioners. This credential is highly valued by academic leaders and allows senior and emerging leaders to explore meaningful connections between research and applied practice in sectors connected to education.

DOCTOR OF PHILOSOPHY PhD

The PhD programs are for those wishing to pursue advanced study, conduct original research, and contribute to the advancement of knowledge.

FACTS

12

Graduate programs to choose from

11

Canada Research Chairs and Endowed Chairs

“There are so many lectures, presentations and activities you can engage in [at OISE]. It feels like you don't need to go outside — the world comes to you.”

LU WANG

MEd 2024 / LHAE
Educational Leadership & Policy

Lu is a Beijing-based education journalist with many years of experience. Her passion for education was ignited during a two week assignment in Thailand where she investigated students attending international schools. Her desire to understand and influence education systems led her to pursue a master of education in educational leadership and policy. Upon graduation Lu went on to secure a full-time position as a policy analyst with the Ontario Ministry of Education.

Read about Lu's story at: [UOFT.ME/LUWANG](https://uoft.me/luwang)



“CREFO * is not only a learning and research environment, but also a community of practice where students can exchange ideas, experiences, and resources.”



YOLLANDE DWEME PITTA

EdD 2022 / SJE

Yollande’s studies investigated the integration of internationally trained professionals from sub-Saharan Africa into the teaching profession in Ontario, Canada. She examined their transition experiences, the challenges they faced, and the strategies they employed for professional integration.

Currently, her research focuses on the influence of immigrant teachers’ inclusive education experiences in a French-speaking minority context, the importance of communities of practice, and teachers’ identities.

Read about Yollande’s story at:
[UOFT.ME/OISE-YDP](https://uoft.me/oise-ydp)

*Centre de recherches en éducation franco-ontarienne

FLEXIBLE OPTIONS

There’s no single road to change, and no two paths are the same. OISE lets you choose the right one for you, from an unparalleled range of study options that fit your needs, your interests, et *votre langue préférée*.



STUDY OPTIONS

COHORT STUDY

Students in a cohort-based program will take their courses together to develop a network.

FLEXIBLE-TIME (PHD ONLY)

Designed for practicing professionals who demonstrate that their employment is related to their intended field of study and research interests. Students must register full-time for the first four years of the flexible-time program while maintaining their career, and with departmental approval, part-time after that.

FULL-TIME STUDY

PART-TIME STUDY

FLEXIBLE DELIVERY OPTIONS

- In-class
- Online (synchronous and asynchronous)
- Hybrid (in-class and online)
- Weekend compressed courses
- Courses taught in French

EXPERIENCE MULTIDISCIPLINARY LEARNING WITH COLLABORATIVE SPECIALIZATIONS

OISE students can participate in a range of collaborative specializations, which are intra-university graduate fields of study that involve two or more graduate units.

Examples include:

- Comparative, International, and Development Education
- Workplace Learning, and Social Change
- Education, Francophonies, and Diversity
- Knowledge Media Design
- Women and Gender Studies

A full list and more information at: [UOFT.ME/COLLAB](https://uoft.me/collab)

SPÉCIALISATION CONJOINTE : ÉDUCATION, FRANCOPHONIES ET DIVERSITÉ

Le Centre de recherches en éducation franco-ontarienne (CREFO) détient la responsabilité administrative d’une nouvelle spécialisation conjointe intitulée : Éducation, francophonies et diversité. Les cours de la spécialisation conjointe ont pour but d’examiner, dans une perspective multidisciplinaire, les réalités éducatives et sociales propres à la francophonie locale, nationale et internationale. Les connaissances acquises permettent de développer chez les étudiantes et les étudiants une perspective critique en ce qui a trait aux grandes questions de l’heure dans le domaine de l’éducation et d’acquérir une solide formation à la recherche. Pour en apprendre plus, [OISE.UTORONTO.CA/CREFO](https://oise.utoronto.ca/crefo)

“OISE’s Black Studies focus stream has been a tremendous blessing to me just for the simple fact that I am surrounded by people who are brilliant, creative, communal, encouraging, and want to push the envelope of academia to a place where community is not excluded.”

MARCUS SINGLETON

MEd 2020 / SJE

Marcus prefers a classroom where there’s no hierarchy structure, “where the classroom can be transformed into a community of learners where we – the teacher and students – can learn together.”

Read about Marcus’ story at:
[UOFT.ME/OISE-MS](https://uoft.me/oise-ms)



TEACHER EDUCATION PROGRAMS

DR. JANETTE PELLETIER

Professor of Applied Psychology and Human Development at the Dr. Eric Jackman Institute of Child Study (JICS)

Read more about the JICS at: [UOFT.ME/JICS](https://uoft.me/jics)

OISE is home to two exemplary graduate teacher education programs where students can delve deeply into multiple domains of research.

Teaching excellence and scholarly research are the mutually reinforcing pillars of our teaching programs, the Master of Teaching, and the Master of Arts in Child Study and Education. Students are prepared to become outstanding teachers and leaders who consult, critique, create, and mobilize educational research. They have the opportunity to complete practicums in local school boards and within our laboratory school where teaching practices and learning opportunities are anchored in inquiry, developmental readiness, and emerging research. As a community, our faculty, students and graduates share a deep commitment to the building of a more just, equitable, and sustainable world.

IMMIGRATION AND CITIZENSHIP CANADA POST-SECONDARY CO-OP WORK PERMIT

In addition to a Canadian study permit, successful international student applicants to the MT program must secure work authorization to participate in the program's teaching placement. This process will most likely involve an immigration medical exam.

Read more at: [UOFT.ME/CIEWORK](https://uoft.me/ciework)

FACTS

92%

of OISE teacher education graduates have teaching jobs in the first year following graduation *

18

Intermediate/Senior teaching subjects to choose from.

BLACK FUTURE EDUCATORS PATHWAY (BFEP)

Black applicants to OISE's Master of Teaching program may choose to select the Black Future Educators' Program Pathway (BFEP) — A dedicated application process meant to decrease the barriers for Black teacher candidates accessing the program.

Read more at: [UOFT.ME/BFEP](https://uoft.me/bfep)

“Being able to examine how theory and practice influence one another has been highly influential in how I think about and approach critical issues in education.”

ATHENA TASSIS

MT 2021 / CTL

When she applied to OISE, Athena Tassis recounts, “I had written ‘I want to become an exceptional educator.’ But having finished my journey here, I’ve gained and learned so much more.” In her time at OISE, Athena has become someone who can think critically about what it means to be a teacher, and how she can bring change to the education landscape.

Read about Athena's story at: [UOFT.ME/OISE-AT](https://uoft.me/oise-at)

*2022 OISE-specific data provided by the Ontario College of Teachers employment survey.

PROGRAMS OF STUDY

You can map your own journey from a wide-range of graduate programs.

PROGRAM LEGEND	DEPARTMENT	DEGREE	MODE*
*Not all study modes listed for a program are available with all degrees.	LHAE	MEd	FT FULL-TIME
	CTL	MA	PT PART-TIME
	APHD	MT	FLEX PHD
	SJE	EdD	COHORT
		PhD	

ADULT EDUCATION & COMMUNITY DEVELOPMENT (AECD)

A leading activist program that focuses on learning that happens individually and collectively among adults in communities, workplaces, social movements, the streets and the virtual world – any place where people come together to create social change.

MEd
MA
PhD
FT PT ↻

EDUCATIONAL LEADERSHIP & POLICY (ELP)

This program is designed for aspiring or current educational leaders looking to further develop their knowledge of policy, leadership, change, and social diversity in and for the PK-12 education system.

MEd
ABOVE OFFERED AS
In Person
Online
MA
EdD
ABOVE OFFERED AS
In Person
Hybrid
PhD
FTPT ↻

FIELDS

- Education Leadership & Policy
- School Leadership in Diverse Contexts (MEd only)
- International Educational Leadership & Policy (EdD only)

IELP OFFERED AS Online Hybrid In Person Summer Institute

HIGHER EDUCATION (HE)

This program is designed for higher education professionals who want to advance their career and gain a research-informed understanding of how colleges and universities work.

MEd
MA
PhD
FTPT ↻

FIELDS

- Education in the Professions (MEd only)* Fully Online
- Higher Education
- Higher Education Leadership (MEd only)
- Student Development and Student Services in Higher Education (MEd only)

*This field is designed for applicants interested in pursuing administrative, research or teaching careers in the professional sector.

CURRICULUM & PEDAGOGY (C&P)

This program involves systematic reflection on research and practice, viewing curriculum as educational experiences in both formal and informal settings.

MEd
MA
PhD
FT PT ↻

FIELD

- Online Teaching and Learning (MEd only)

LANGUAGE & LITERACIES EDUCATION (LLE)

This program is intended for students who are interested in investigating questions around the relationships of literacies in language or language in literacies across communities, societies, instructional environments, and informal learning settings.

MEd
MA
PhD
FT PT ↻

FIELD

- Language Teaching (MEd only)

MASTER OF TEACHING (MT)

Designed for people who are looking to become exceptional teachers and leaders in education.

MT
FT

FIELDS

- Primary/Junior (jr. kindergarten – grade 6)
- Junior/Intermediate (grades 4 – 10)
- Intermediate/Senior (grades 7 – 12)

PROFESSIONAL CREDENTIAL

MT Graduates are recommended to the Ontario College of Teachers (OCT) for certification upon successful completion of the program and graduating.

CHILD STUDY & EDUCATION (CSE)

Become an exemplary teacher through our unique child-centred MA program or a leader of change in the field of education with our EdD program.

MA
EdD
ABOVE OFFERED AS
In Person
Hybrid
FT

FIELDS

- Practice-Based Inquiry (PBI) in Psychology and Educational Practice (MA only)

PROFESSIONAL CREDENTIAL

MA CSE graduates are recommended to the Ontario College of Teachers (OCT) for Primary/Junior certification upon successful completion of the program and graduating.

COUNSELLING PSYCHOLOGY (CP)

This program provides individuals with the opportunity to learn and develop counselling skills for various settings.

MEd
EdD
FT

FIELDS

- Counselling and Psychotherapy
- Global Mental Health and Counselling Psychology (MEd only)
- School Psychology (EdD only) Hybrid

PROFESSIONAL CREDENTIAL

The field in Counselling and Psychotherapy within the Counselling Psychology MEd is a recognized education and training program in psychotherapy by the College of Registered Psychotherapists of Ontario (CRPO). Global Mental Health and Counselling Psychology will not lead to registration as a counsellor by Ontario accrediting bodies. The Guidance and Counselling program provides basic academic preparation for certification as a Certified Canadian Counsellor (CCC) with the Canadian Counselling and Psychotherapy Association (CCPA).

COUNSELLING & CLINICAL PSYCHOLOGY (CCP)

Become a scientist practitioner in the area of counselling and clinical psychology.

MA
PhD
FT PT

FIELD

- Clinical and Counselling Psychology

PROFESSIONAL CREDENTIAL

This program enables graduates to apply for registration with the College of Psychologists of Ontario (CPO) as a Psychological Associate (MA graduates) or Psychologist (PhD graduates).

DEVELOPMENTAL PSYCHOLOGY & EDUCATION (DPE)

This program is ideal for successful educators or practitioners who aspire to improve student success through innovative approaches to learning and teaching.

MEd
ABOVE OFFERED AS
In Person
Hybrid
Fully Online
MA
PhD
ABOVE OFFERED AS
In Person
Hybrid
FT PT ↻

SCHOOL & CLINICAL CHILD PSYCHOLOGY (SCCP)

The SCCP program provides theoretical, research, and professional training in clinical and school psychology for students who are passionate about improving the mental health and well-being of children, youth, and families.

MA
PhD
FT

PROFESSIONAL CREDENTIAL

This program enables graduates to apply for registration with the College of Psychologists of Ontario (CPO) as a Psychological Associate (MA graduates) or Psychologist (PhD graduates).

SOCIAL JUSTICE EDUCATION (SJE)

This program is designed for students interested in social justice, committed to social change, or aspiring to assume research-informed responsibilities in a school or community organization.

MEd
MA
ABOVE OFFERED AS
In Person
Hybrid
Online
FTPT ↻
EdD
PhD
ABOVE OFFERED AS
In Person
Hybrid
FTPT ↻

For complete detailed admission requirements (plus application procedures, required supporting documents, deadlines, and more), visit: [UOFT.ME/OISEADMISSIONS](https://uoft.me/oiseadmissions)

Program requirement information is based on the 2024-25 OISE Bulletin found at: [OISE.ACADEMIC-GUIDE.UTORONTO.CA](https://oise.academic-guide.utoronto.ca) and is subject to change for 2025-26.

OPPORTUNITIES OUTSIDE THE CLASSROOM



At OISE, we recognize that learning doesn't occur solely within a classroom. That's why we offer a range of opportunities that can enhance your academic experience, including work-study positions, clubs, councils, and committees. Each one enables you to follow your interests, learn about different cultures, and express yourself.

STUDENT PROFILES

AAKRITI MAHAJAN

MEd 2024 / CTL
Curriculum & Pedagogy

"As an OISE Student Ambassador, I gained invaluable learnings that expanded my understanding of education and its transformative potential. Collaborating with passionate educators, researchers, and students broadened my understanding of the field of education and its transformative impact. I encourage future students to embrace the opportunities available and align them with your passions and goals. Seek support and guidance from your faculty and department, as they are dedicated to your success and can provide valuable insights and resources."



JIYOUNG KANG

Current student, flex-time PhD / SJE
MEd 2022 / LHAE

"During my work study experience, I co-facilitated the OISE mentorship program for international students. The program supports international students, connecting incoming and currently enrolled students while offering them a sense of community. My work-study experience enabled me to identify my competencies and skills, and it served as a stepping stone for me to enter the Canadian higher education profession. I strongly recommend work-integrated learning experiences to explore exciting roles at the university and build an amazing network."



STEFAN THOMAS

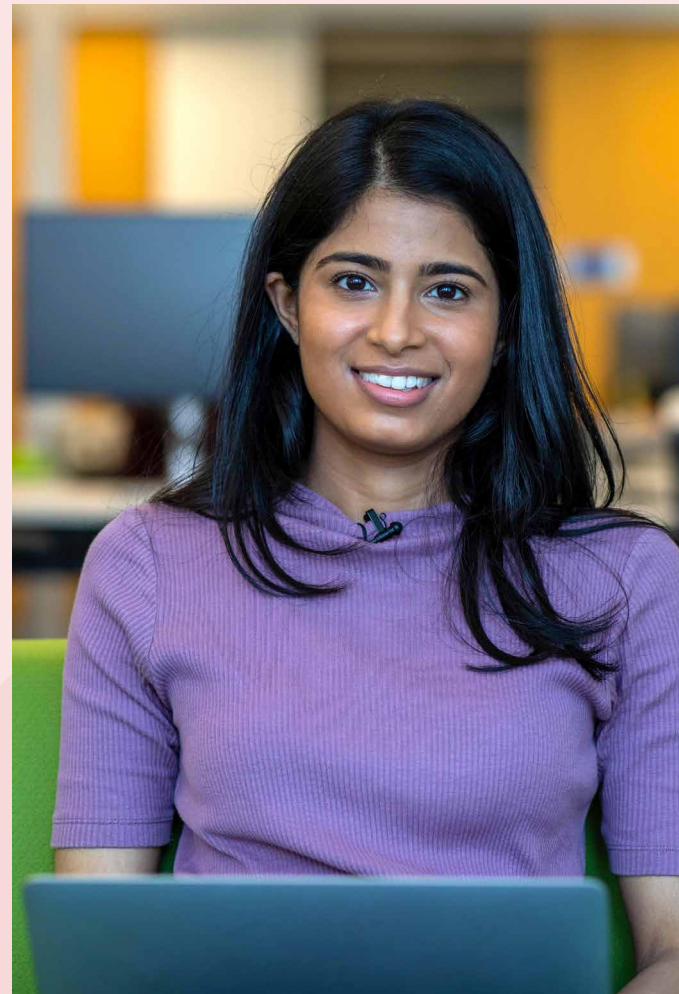
MEd 2024 / LHAE
Higher Education; Field: Student Development
& Student Services

"I secured an internship position as a Student Engagement Assistant with the Department of Leadership, Higher & Adult Education. It was a transformative opportunity. To secure this position, I took a prerequisite course called Student Development Theory, which provided me with the foundational knowledge to excel not only in the internship but also in the work field. Through my internship experience, I learned how to ground my projects in theories that helped me better understand the student population I was serving. I also learned how to adequately plan, coordinate, and execute all facets of a student engagement event."



SUPPORTING YOUR STUDIES

OISE students have access to a wide range of supports and services. OISE's Registrar's Office and Student Experience can help connect students with accessibility and disability services, career advising, counselling, professional development opportunities, academic workshops, and teacher employment preparation services.



OISE STUDENT SUCCESS CENTRE (OSSC)

The OISE Student Success Centre (OSSC) is a full-service academic and cultural communication resource and support centre. Key services include supports for academic writing, English language development, and presentation skills.

[OISE.UTORONTO.CA/CURRENT-STUDENTS/OISSC](https://oise.utoronto.ca/current-students/oissc)

OISE MENTORSHIP PROGRAM

The OISE Mentorship Program is dedicated to ensuring meaningful dialogue and mutual learning between alumni and students. Why not get involved?

[UOFT.ME/OISEMENTORSHIP](https://uoft.me/oisementorship)

For detailed information on the health and wellness student services offered by U of T visit: [UOFT.ME/WELLNESS](https://uoft.me/wellness)

MENTAL HEALTH / COUNSELLING

Mental, physical health, and well-being are foundational to student success. The University of Toronto offers an array of services to support student well-being, including counselling available for all OISE students.

[UOFT.ME/ROSECOUNSELLING](https://uoft.me/rosecounselling)

INTERNATIONAL STUDENTS' ASSOCIATION (ISA)

ISA represents international students at OISE. It holds meetings for academic and cultural exchange, hosts social and cultural events and activities, and caters to the needs and interests of international students.

OISEISA@UTORONTO.CA

FUND YOUR JOURNEY

ANNUAL TUITION FEES *

Full-Time Domestic Fees:

Degree	Tuition	Incidental**	Total
Master of Education (MEd)	\$10,070	\$2,141.53	\$12,211.53
Master of Arts (MA)	\$6,860	\$2,141.53	\$9,001.53
Master of Arts (MA CSE)	\$10,070	\$2,141.53	\$12,211.53
Master of Teaching (MT)	\$10,070	\$2,141.53	\$12,211.53
Doctor of Education (EdD)	\$7,537	\$2,141.53	\$9,678.53
Doctor of Philosophy (PhD)	\$6,210	\$2,141.53	\$8,351.53

Part-Time Domestic Fees:

Degree	Tuition	Incidental **	Total
Master of Education (MEd)	\$3,021	\$1,174.49	\$4,195.49
Master of Arts (MA)	\$2,058	\$1,174.49	\$3,232.49
Master of Arts (MA CSE)	N/A	N/A	N/A
Master of Teaching (MT)	N/A	N/A	N/A
Doctor of Education (EdD)	\$2,261.10	\$1,174.49	\$3,435.59
Doctor of Philosophy (PhD)	\$1,863	\$1,174.49	\$3,037.49

Full-Time International Fees†:

Degree	Tuition	Incidental & UHIP**	Total
Master of Education (MEd)	\$45,860	\$2,897.53	\$48,757.53
Master of Arts (MA)	\$30,350	\$2,897.53	\$33,247.53
Master of Arts (MA CSE)	\$45,860	\$2,897.53	\$48,757.53
Master of Teaching (MT)	\$43,680	\$2,897.53	\$46,439.96
Doctor of Education (EdD)	\$44,380	\$2,897.53	\$47,277.53
Doctor of Philosophy (PhD)	\$6,210†	\$2,897.53	\$9,107.53

FINANCIAL SUPPORT

Financial planning and general financial aid counselling is available to admitted students. Depending on your program of study, there are a number of sources of support for OISE students. [UOFT.ME/OISEMONEYMATTERS](https://uoft.me/oisemoneymatters)

ON-CAMPUS EMPLOYMENT

OISE students have access to a wide range of opportunities, including Graduate Assistantships, Summer Graduate Assistantships, Research & Development Graduate Assistantships, Teaching Assistantships, and Work Study.

FINANCIAL AID AND AWARDS

OISE students have the opportunity to apply for financial aid and awards such as the Ontario Student Assistance Program (and other provinces' student support programs), OISE and University of Toronto-based scholarships, awards, bursaries and grants. [UOFT.ME/OISEFINANCIALAID](https://uoft.me/oisefinancialaid)

OISE GRADUATE FUNDING PACKAGE

OISE offers funding packages to students in full-time PhD programs and non-professional MA programs. OISE's graduate funding package is designed to provide students in the funded cohort a minimum level of support to offset the cost of graduate education. In 2024/25, the minimum the funding package is \$25,4351.53 including tuition and incidental fees.

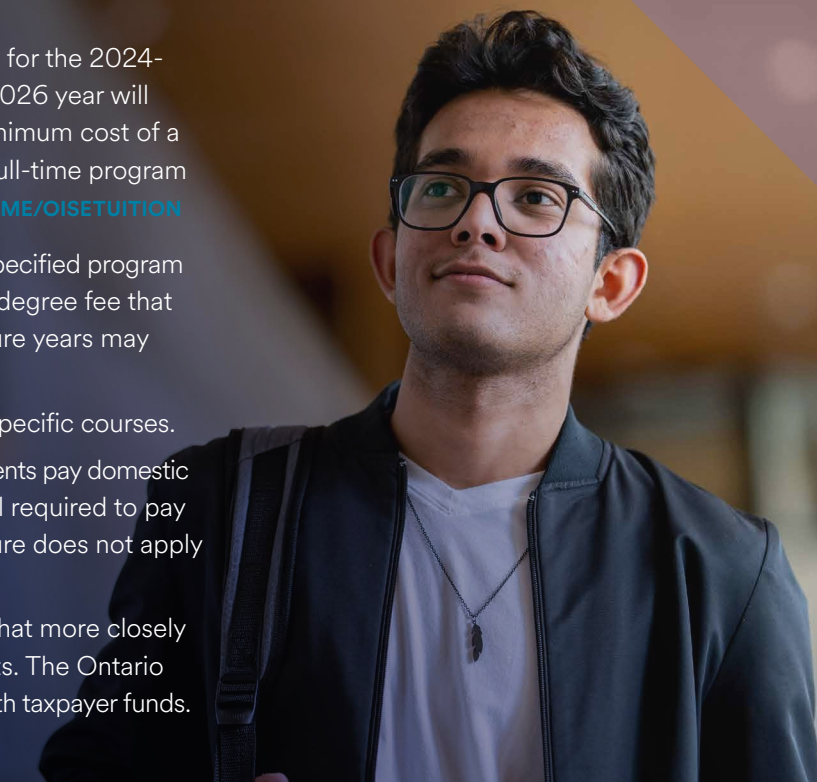
* Note: The above table shows tuition costs for the 2024-2025 academic year. Fees for the 2025-2026 year will be available in the spring of 2025. The minimum cost of a master's program is based on the official full-time program length, which is listed on our website [UOFT.ME/OISETUITION](https://uoft.me/oisetuition)

Completing your program faster than the specified program length could result in paying a balance of degree fee that rounds out the minimum cost. Fees in future years may be higher.

** There may be additional ancillary fees for specific courses.

‡ Since Fall 2018, international OISE PhD students pay domestic tuition rates. International students are still required to pay UHIP. This new international tuition structure does not apply to any other OISE graduate programs.

† Note: International tuition is set at a level that more closely reflects the true cost of educating students. The Ontario Government subsidizes domestic tuition with taxpayer funds.



YOU BELONG HERE

OISE is home to a global community of top students, faculty, and researchers united in a passion for advancing education research, practice, and policy. Our exceptional programs in Toronto's bustling downtown core attract students from around the world. Challenge yourself in a supportive learning environment that features a world-class education library, modern technology, and welcoming spaces for collaboration.



THIS IS YOUR COMMUNITY

90+

Countries represented in the student body

100+

Student clubs

21+

Intermural sports

9

Unique multi-faith spaces

OISE respects the requirements set forth under the Accessibility for Ontarians with Disabilities Act (AODA). The 2025/2026 viewbook is available in a PDF format at [UOFT.ME/OISEVIEWBOOK](https://uoft.me/oiseviewbook)

WE'VE GOT YOUR BACK

Here are some of the many student resources available at the University of Toronto:

Accessibility Services
[STUDENTLIFE.UTORONTO.CA/AS](https://studentlife.utoronto.ca/as)

Centre for International Experience (CIE)
[CIE.UTORONTO.CA](https://cie.utoronto.ca)

Anti-Racism and Cultural Diversity Office
[ANTIRACISM.UTORONTO.CA](https://antiracism.utoronto.ca)

Family Care Office
[FAMILYCARE.UTORONTO.CA](https://familycare.utoronto.ca)

First Nations House
[STUDENTLIFE.UTORONTO.CA/FNH](https://studentlife.utoronto.ca/fnh)

Health and Wellness Centre
[STUDENTLIFE.UTORONTO.CA/HWC](https://studentlife.utoronto.ca/hwc)

Multi-Faith Centre
[STUDENTLIFE.UTORONTO.CA/MF](https://studentlife.utoronto.ca/mf)

Sexual and Gender Diversity Office
[SGDO.UTORONTO.CA](https://sgdo.utoronto.ca)

Safety and Support Office
[SAFETY.UTORONTO.CA](https://safety.utoronto.ca)

Centre for Black Studies in Education
[OISE.UTORONTO.CA/CBSE/ABOUT](https://oise.utoronto.ca/cbse/about)

THE NEXT STEP IS YOURS

THE APPLICATION

The online application consists of several components, and each section must be filled out carefully, as your application will be processed based on the information provided. Before you apply review the step-by-step application guide that walk you through each phase of the online application. After submitting your application, it cannot be modified. This policy cannot be waived under any circumstances.

THE APPLICATION HOW-TO GUIDE

Scan here to learn more about how to apply.

[UOFT.ME/APPLICATIONGUIDE](https://uoft.me/applicationguide)



APPLICATION FEES

An application is considered officially submitted only after the payment of both non-refundable application fees (a total of \$235.00 CAD), with each fee paid separately.

SGS Application Fee (\$125.00 CAD)

Supplemental Application Fee (\$110.00 CAD)

Upon payment of the total application fee for your first OISE application, no additional fees are required for the second and third OISE applications within the same academic year.

INTERNATIONAL CREDENTIALS

Applicants who have completed part or all of their post-secondary studies abroad, including international exchange, are considered to have international credentials. Review the International Credentials Equivalencies website.

[UOFT.ME/ICEQUIVALENCIES](https://uoft.me/icequivalencies)

SUPPORTING DOCUMENTS

Supporting documents include letters of reference, résumé, and transcripts (unofficial electronic transcripts are required when applying; official transcripts are needed only if you are admitted). Some programs request additional supporting documents. Once you submit and pay for your application, you will have up to 10 days to upload your supporting documents.



APPLICATION DEADLINES

November 4, 2024:

- All funded programs (full-time PhD and full-time MA)
- Master of Teaching
- MA in Child Study and Education
- MEd in Counselling Psychology (Counselling & Psychotherapy field only)
- Part-time MA, PhD flexible-time and EdD.

January 15, 2025:

- All other MEd programs

For a detailed list of current program closing dates, visit:

[UOFT.ME/CLOSINGDATES](https://uoft.me/closingdates)

You can complete the OISE application online:
[ADMISSIONS.SGS.UTORONTO.CA/APPLY](https://admissions.sgs.utoronto.ca/apply).

APPLICATION EVALUATIONS & NOTIFICATION OF RESULTS

The evaluation methods of each program admission committee varies. However, once they have made a recommendation, the Registrar's Office & Student Experience reviews the recommendations and prepares the correspondence to applicants. You will be provided with official written notification of the results for each of your applications. This will typically take the form of an "Offer of Admission," a "Notification of Waitlist Status," or a "Notification of Refusal." Official results are final and not subject to appeal.

For more details on the application process visit: [OISE.UTORONTO.CA/HOME/REGISTRAR-STUDENTS/ADMISSIONS](https://oise.utoronto.ca/home/registrar-students/admissions)

CONNECT

WITH US

**Need help choosing a program?
Our advisors have the answers
you're looking for:**

[UOFT.ME/OISECONNECT](https://uoft.me/oiseconnect)

**Experience OISE at an
upcoming event:**

[UOFT.ME/EXPERIENCEOISE](https://uoft.me/experienceoise)

**Join our mailing list for invitations
to future students' events:**

[UOFT.ME/OISE-FSE](https://uoft.me/oise-fse)

**Contact the Registrar's Office and
Student Experience (ROSE):**

416-978-4300
252 Bloor Street West,
Room 8-225
Toronto, ON M5S 1V6
COME2OISE@UTORONTO.CA
[OISE.UTORONTO.CA](https://oise.utoronto.ca)

Follow us on social

[@OISEUOFT](https://twitter.com/OISEUOFT)



carbonzero
Printer is carbonzero neutral

For a quick recap of all links
found in this viewbook, visit:

[INSTABIO.CC/31012154RGREA](https://instabio.cc/31012154RGREA)



OISE